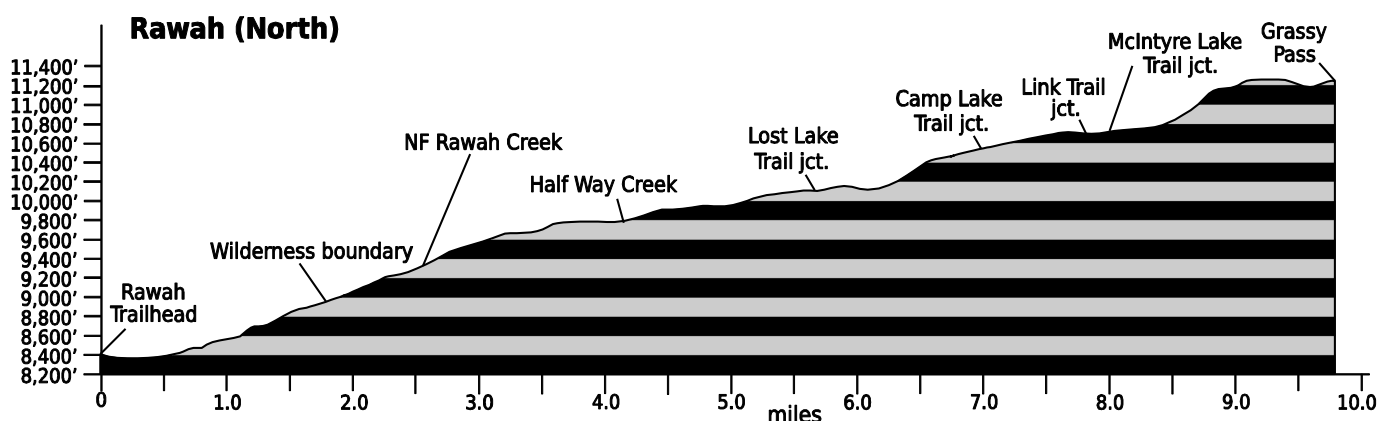


Feb. 10, 2021

Public Trail Information: Rawah (North)

Trail(s): northern portion of Rawah #961	
Ratings / restrictions:	Hikers - Moderate Stock riders - Difficult Dogs must be on hand-held leash with hikers See COMPLETE regulations below DESCRIPTION
Cautions:	Moose; lightning in exposed alpine areas near Grassy Pass
Typically accessible:	Late June, after Laramie River Road is open for the season
Wilderness:	Rawah
One-Way Length:	9.8 miles (Rawah Trailhead to Grassy Pass)
Beginning / Peak Elevations:	8,378 / 11,261
Gain/Loss/Net Gain:	2,982/120/+2,862
Map(s) - Trails Illustrated:	#112 Poudre River, Cameron Pass; Mountain Jay, Rawah Wilderness
Map(s) - USGS 7-1/2' Quadrangles:	Rawah Lakes



TRAILHEAD LOCATION:

Rawah Wilderness Area: Drive up the Poudre Canyon on CO-14 for 51.6 miles from Ted’s Place, turn right onto Laramie River Road (CR-103) at mm 71.5, and drive 12.2 miles to the Rawah Trailhead and parking lot, which are located on the east (right) side of the road across from the Rawah Guest Ranch. Park here and cross the road to the trail.

Toilets are available at the Rawah Trailhead. The medium-sized parking lot with two entrances, plus the ability to park along the road, make this trailhead very accessible for stock trailers. No water at the trailhead, but water is available at the Laramie River crossing about 0.2 mile from trailhead.

TRAIL: Nearly the entire length of this trail passes through forest where the corridor is very visible. The trail tread is well established, rocky and eroded and easy to follow.

WATER: Abundant sources of water are numerous and well distributed along this trail. From the trailhead to Grassy Pass these include: Laramie River, lower Rawah Creek, North Fork Rawah Creek, Half-Way Creek, upper Rawah Creek, Rawah Lake #1, the stream draining Little Rainbow Lake, Rawah Lake #2, Rawah Creek between Rawah Lakes #2 and #3, and

the pond along the trail between Rawah Lake #3 and Rawah Lake #4.

CAMPING: There are many nice camping locations along this trail. One location is at Lost Lake (about 0.9 mile NW of the Rawah Trail [N] at 5.7 miles above the trailhead). A second good location is along the south side of Rawah Bog, at about 6.1 miles (take the trail to where it goes west of the bog and then cut east). A third good location is at “7-mile meadow”, about 6.7 miles above the trailhead. The unmarked spur trail to this camping area junctions with the Rawah Trail (N) at GPS N40°42.18’ W105°56.22’, 0.2 mile below the Rawah Trail and Camp Lake Trail junction, at the point where the Rawah Trail crosses a small stream coming down from the west-northwest (this is the hiker crossing, not the stock crossing). The faint spur trail meanders more-or-less northward for a couple hundred yards through an open meadow-like area. A good camp is at GPS N40°42.30’ W105°56.29’. Water for people and stock can be obtained where the Rawah Trail crosses the small stream.

Camping sites may also be found along the south side of “7-mile meadow”.

Good campsites can also be found further along the Rawah Trail below Rawah Lake #1. There are also

potential campsites off the trail, near Rawah Lake #3 (somewhat exposed – in or near krummholz islands). Wood fires are prohibited in the Rawah Alpine Closure Area above 10,800 ft, including around Rawah lakes #3 and 4; however, chemical stoves are allowed. Be sure you camp at least 200 ft from water and trails.

SEASONAL: *Not accessible in winter, as Laramie River Road is not plowed. Also, the unbridged crossing of the creek draining Little Rainbow Lake (near Rawah Lake #1) and the unbridged crossing of Rawah Creek (between Rawah lakes #2 and #3) both can be challenging during high stream flows, even if you are prepared to wade.*

DESCRIPTION: The first part of the trail travels through the flat Laramie River Valley on an easement across private property. After 1.8 miles, the trail enters the Rawah Wilderness. After leaving the valley the trail climbs steadily through a lodgepole pine forest before leveling out along the Rawah Creek drainage.

REGULATIONS:

- Camping and Fires – Prohibited within 200 feet of trailhead, toilets, and parking area. Outside the Wilderness boundary, recommend at least 100 feet from water and trail. In the Wilderness, prohibited within 200 feet of water or trail. Wood fires prohibited above 10,800 feet elevation (Rawah Alpine Closure Area).
- Dogs – Must be on hand-held leash with hikers, voice control with stock.
- Stock – To avoid spreading noxious weeds, recommend beginning 72 hours prior to the ride stock feed should only be pellets or certified weed free hay. Required: throughout the trip, any feed *must* be pellets or certified weed-free hay.
- Bicycles and Other Wheeled Conveyances – Prohibited.
- Motorized Transport – Prohibited.
- Group Size – Outside the Wilderness boundary, more than 74 people in a single group must have a USFS permit. In the Wilderness, maximum 12 people and stock, combined.

The northern part of the Rawah Trail provides access to: Lost Lake, Camp Lake & Upper Camp Lake, the Sandbar lakes, the four Rawah lakes, the southern ends of the Link and McIntyre Lake trails, and Grassy Pass.

About 5.6 miles from the trailhead, in the vicinity of the Rawah Bog, you will encounter the Lost Lake Trail heading uphill to the northwest (see the Lost Lake Trail patrol description). After this intersection, continue around the Rawah Bog and up another steep, rocky area.

Camp Lake Trail junction is encountered at 6.9 miles. There is a 3-log stringer bridge across Rawah Creek at the western end of the Camp Lake Trail.

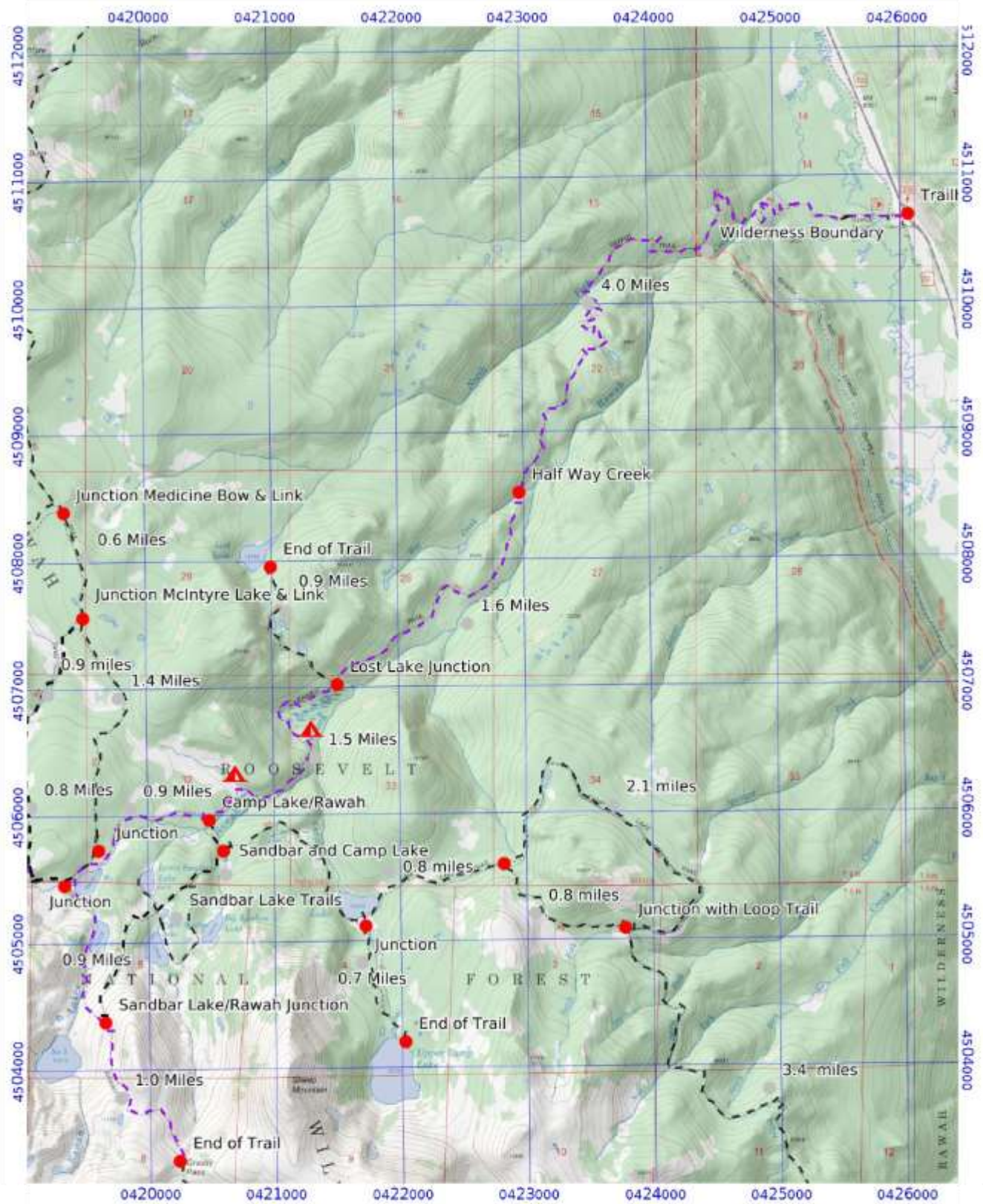
This hike includes the lower three Rawah Lakes, Grassy Pass, and - off-trail a bit - Rawah Lake #4, which sits in a majestic bowl to the southwest of Grassy Pass. Bighorn sheep can sometimes be spotted in the Grassy Pass area. This patrol ends at Grassy Pass.

Reminders: Camp at least 200 ft. from streams and lakes and from the trail. Wood fires are prohibited above 10,800 ft elevation.

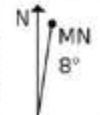
Mileages provided are approximate.

Mileage	GPS Coordinates: datum = WGS84	Lat/Long	UTM
0	Rawah Trailhead (on Laramie River Road; CR-103)	N40°44.63' W105°52.55'	426 ⁰⁵⁶ mE 4510 ⁶⁸⁹ mN
1.8	Wilderness boundary	N40°44.51' W105°53.73'	424 ³⁹³ mE 4510 ⁴⁸⁴ mN
2.5	North Fork Rawah Creek	N40°44.28' W105°54.35'	423 ⁵¹⁶ mN 4510 ⁰⁶⁷ mN
4.1	Half Way Creek	N40°43.43' W105°54.73'	422 ⁹⁶⁵ mE 4508 ⁵⁰⁰ mN
5.6	junction with Lost Lake Trail	N40°42.63' W105°55.75'	421 ⁵¹⁴ mE 4507 ⁰³⁵ mN
6.9	junction with Camp Lake Trail	N40°42.03' W105°56.45'	420 ⁵¹⁶ mE 4505 ⁹³⁶ mN
7.9	junction with Link Trail	N40°41.86' W105°57.14'	419 ⁵⁴¹ mE 4505 ⁶³² mN
8.0	junction with McIntyre Lake Trail	N40°41.78' W105°57.25'	419 ³⁸⁵ mE 4505 ⁴⁸⁵ mN
8.7	crossing of Rawah Creek (difficult if high flow)	N40°41.39' W105°57.15'	
9.0	junction with Sandbar Lakes Trail	N40°41.16' W105°57.03'	
9.8	Grassy Pass	N40°40.58' W105°56.60'	420 ²⁷⁶ mE 4503 ²¹⁸ mN

(See next page for map of trail).



Mercator Projection
 WGS84
 UTM Zone 13T
 CalTopo



Rawah (North): 4