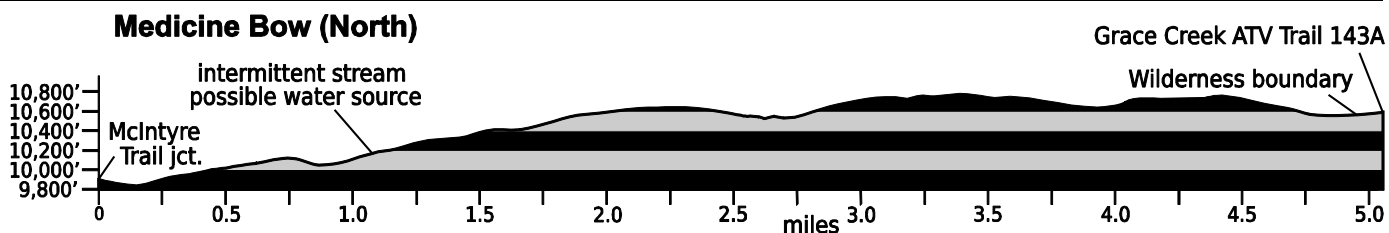


Jan. 31, 2021

Public Trail Information: Medicine Bow (North)

Trail(s): northern portion of Medicine Bow #965	
Ratings / restrictions:	Hikers – Moderate Stock riders – Moderate Dogs must be on hand-held leash with hikers See complete REGULATIONS below DESCRIPTION
Cautions:	Lightning in exposed alpine areas
Typically accessible:	Late June, after Laramie River Road is open
Wilderness:	Rawah
One-Way Length:	5.1 miles (from Ute Pass to end of patrol at intersection with Grace Creek ATV Trail)
Beginning / Peak Elevations:	9,893 (at Ute Pass) / 10,766
Gain/Loss/Net Gain:	1,371 / 609 / +762
Map(s) - Trails Illustrated:	#113 Cowdrey North Sand Hills; Mountain Jay - Rawah Wilderness
Map(s) - USGS 7-1/2' Quadrangles:	Shipman Mountain



TRAILHEAD LOCATION:

Rawah Wilderness Area: From the east, the Medicine Bow (North) Trail can be accessed via the McIntyre Trail. See the McIntyre trail description for details.

Toilets and stock water are available at the Browns Park Campground. Toilets and stock trailer parking are available at the McIntyre trailhead.

Western Access: Alternatively you can access the Medicine Bow trail from the north end IF you have a high-clearance vehicle and are willing to drive a little farther. Drive west on CO-14 to Walden, north on CO-125 about 4.5 miles, east on Jackson County Rd 8 about 7 miles, about 100 yards past a fence line, then 8A to its end. The junction of CR-8 and 8A is NOT signed, but it is the 2nd branch to the left off of CR-8. On CR-8A, take the right branch at the Y (about 12 miles from CO-125). CR-8A requires an all-wheel drive vehicle. Drive 3 more miles and park at roughly N40°52.21'/W106°07.63' and about 10,600' elevation. Hike downhill toward the east, to the start of the Grace Creek ATV trail #143, signed as Medicine Bow Road, then 2 easy miles along that trail to its end and the north end of Medicine Bow Trail. Plan for 5 hours total travel time from Fort Collins to the start of the trail.

TRAIL: The southern and northern sections of the trail pass through mostly forested lands. The middle part wanders through open alpine meadow, with expansive views of North Park to the west

In forested stretches, the trail route is sporadically marked with small metal reassurance markers (some painted red or orange and some bare) in trees 5-9 ft above the ground, and by old USFS axe blazes. Above timberline, the route is marked by rock cairns 2-4 ft high.

The trail path is bare, with rocks and gravel for most of its length. It is in quite good condition, as it gets very little use.

WATER: Scarce - Water is available from East Sand Creek at the south end of the trail. From Ute Pass, hike 1/4 mile west down from the ridge.

The trail also crosses a small creek at 1.1 miles north of Ute Pass. There is a good place for filling a water jug just downstream from the crossing.

Another small creek crosses the trail at 2.6 miles north of Ute Pass.

CAMPING: The best camping location is in the forested area just north of Ute Pass, where there is room for multiple tents.

An alternative site is at GPS N40°49.12' W106°3.90', on the east side of the trail and slightly above the first small creek crossing. The site is large enough for 2-3 small tents.

There are numerous potential camping locations in forested areas along the northern portion of the trail but none are near water sources.

SEASONAL: Not accessible in winter, as Laramie River Road is not plowed.

DESCRIPTION: The Medicine Bow (North) Trail heads north from the end of the McIntyre Trail at Ute Pass.

It is unlikely that you will meet anyone except during hunting season.

The trail follows the crest of the Medicine Bow Range north, starting in forest then breaking out into islands of krummholz and open meadow areas. It affords tremendous views in all directions: North Park and Mount Zirkel to the west, the Snowy Range to the north, and Deadman Mountain to the east. Much of the upper trail is stunningly beautiful with lots of bare fallen trees, impressive rock outcrops, and amazing views!

Note that the middle 2 miles of this trail (from Shipman Mountain north) are right at 10,800 ft elevation so that wood fires are prohibited along this

section of the trail (Rawah Wilderness Alpine Closure Area).

The trail exits Wilderness about 1/4 mile south of the trail's end.

Shortly before exiting the Wilderness are two trail junctions marked with large rock cairns with posts sticking out of them. These trails are NOT maintained.

Continue to the north end of the trail, where it meets the end of the Grace Creek ATV Trail (143A). The USFS has felled numerous trees here to act as vehicle barriers.

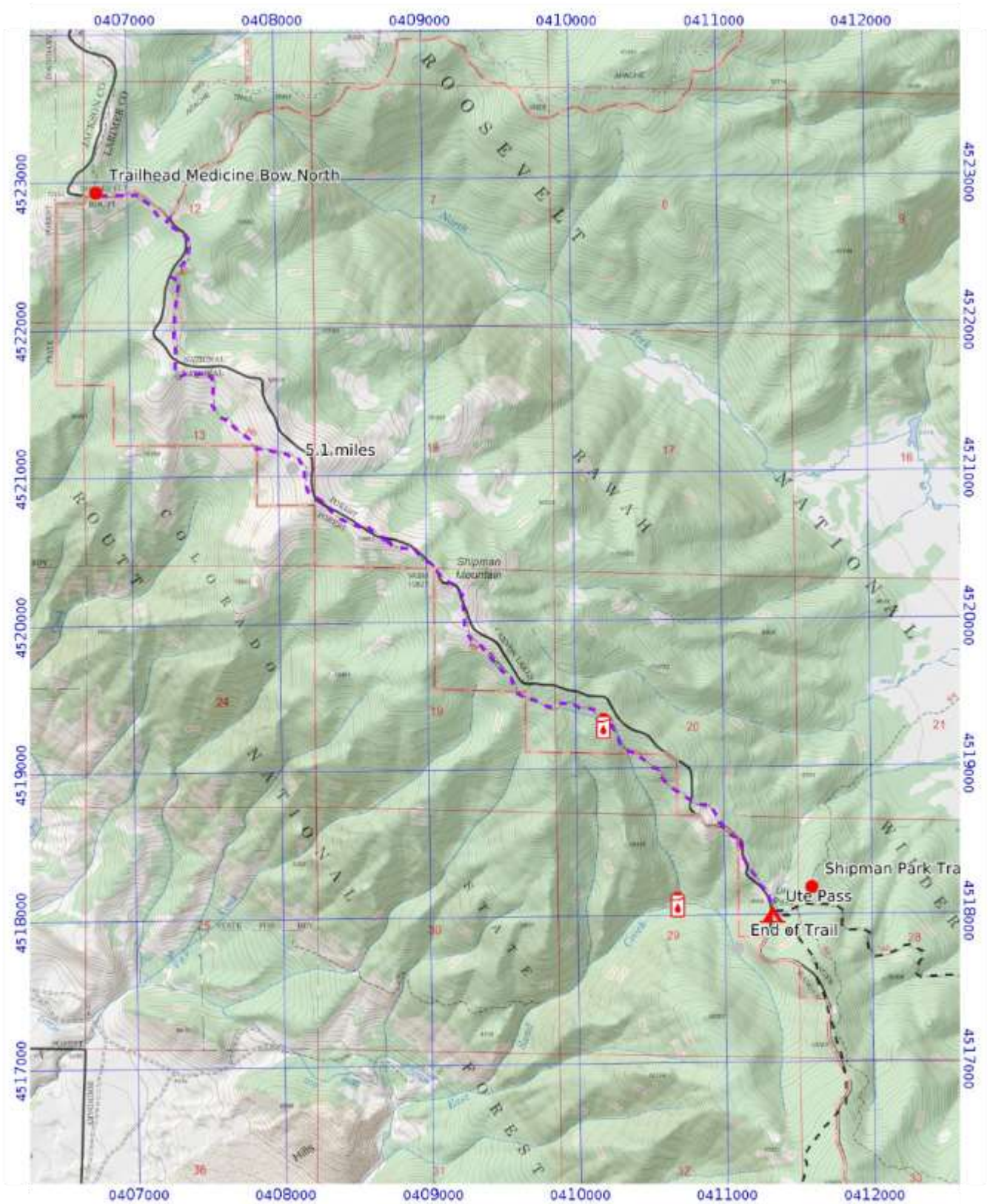
From the north end of the trail, turn around and retrace the trail south to return to Ute Pass and exit via the McIntyre Trail or the Medicine Bow (South) Trail.

REGULATIONS:

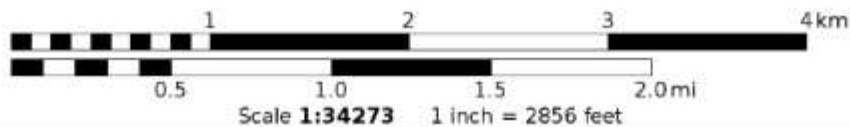
- Camping and Fires – Prohibited within 200 feet of water or trail.
- Dogs – Must be on hand-held leash with hikers, voice control with stock.
- Stock – To avoid spreading noxious weeds, recommend beginning 72 hours prior to the ride, stock should be fed only pellets or certified weed-free hay. Required: throughout the trip, stock *must* be fed only pellets or certified weed-free hay.
- Bicycles and Other Wheeled Conveyances – Prohibited.
- Motorized Transport and Equipment – Prohibited.
- Group Size – Maximum 12 people and stock, combined.

Mileage	GPS Coordinates: datum = WGS84	Lat/Long	UTM
0	"trailhead" at junction with McIntyre Trail	N40°48.50' W106°03.02'	411409mE 4518011mN
0.1	recommended campsite near Ute Pass	N40°48.63' W106°03.11'	411285mE 4518253mN
1.1	water source-1 (small intermittent stream)	N40°49.12' W106°03.81'	410312mE 4519171mN
2.6	water source-2 (small intermittent stream)	N40°49.65' W106°04.98'	408680mE 4520172mN
5.0	Exit Rawah Wilderness	N40°51.12' W106°06.19'	407013mE 4522913mN
5.1	end of trail at Grace Creek ATV Trail (143A)	N40°51.19' W106°06.37'	406762mE 4523046mN
5.7	Apache ATV Trail junction	N40°51.70' W106°05.43'	
7.1	End of JCR-8A	N40°52.21' W106°07.63'	405017mE 4524956mN

(See next page for map of trail.)



Mercator Projection
 WGS84
 UTM Zone 13T
 CalTopo



Medicine Bow (North): 3