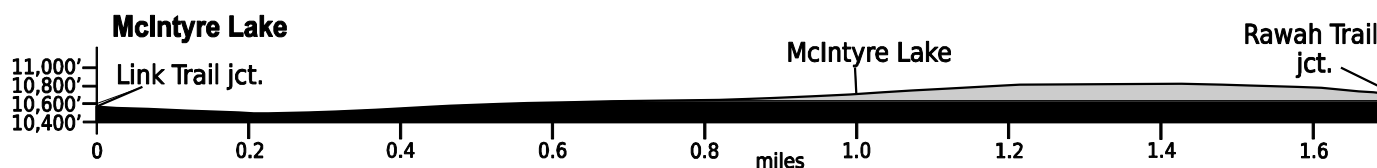


Jan. 2, 2021

Public Trail Information: McIntyre Lake

| | |
|---------------------------------|---|
| Trail(s): McIntyre Lake #964 | |
| Ratings / restrictions: | Hikers – Easy Stock riders – Moderate Dogs must be on a hand-held leash with hikers See complete regulations below DESCRIPTION |
| Cautions: | None |
| Typically accessible: | Late June, after Laramie River Road is open |
| Wilderness: | Rawah |
| One-Way Length: | 1.7 miles (from junction with Link Trail to junction with Rawah Trail [N] at Rawah Lake #1) |
| Beginning / Peak Elevations: | 10,577 / 10,830 |
| Gain/Loss/Net Gain: | 374/217/+157 |
| Map(s) - Trails Illustrated: | #112 Poudre River Cameron Pass; Mountain Jay - Rawah Wilderness |
| Map(s) - USGS 7-½' Quadrangles: | Rawah Lakes |



TRAIL LOCATION:

The McIntyre Lake Trail can be accessed via the Link Trail as described below, or via the Rawah Trail (North). See the Link Trail and Rawah (North) trail descriptions for more details.

TRAIL: Nearly the entire length of this short trail passes through established forest. The trail corridor is readily visible and the trail tread is well established and easy to follow (despite the fact that there are few old USFS blazes in trees and only occasional, small rock cairns).

WATER: Abundant - Water can be obtained from lower Rawah Creek, NF Rawah Creek, Half Way Creek, upper Rawah Creek, Rawah Lake #1, the creek flowing out of Little Rainbow Lake, McIntyre Lake, and upper McIntyre Creek.

CAMPING: The best camping locations are in the vicinity of Little Rainbow Lake, where there are several options. The largest site (which can accommodate up to 8 tents and has room to stake out up to 4 llamas) is located about 100 yards north of the stream flowing out of Little Rainbow Lake and about 200 yards west of the McIntyre Lake Trail) at approximately GPS N40 41.70' W105 57.52' (UTM: 4505300mN 419000mE). From the junction with the Rawah Trail, take McIntyre Lake Trail west about 300 yards to where it turns abruptly to the north, and then bushwhack about 200 yards southwest to the site. There are several other suitable sites in this general area. All camping sites in this area are close to water sources (Little Rainbow Lake and the stream flowing out of it).

Suitable locations for camping can also be found on the large bench southeast of McIntyre Lake. To access this area, proceed as follows: From the junction with the Rawah Trail, take McIntyre Lake Trail about 500 yards, cut through the small pines to the east of the trail, and a large meadow will open before you. This is an especially good place for stock, as there are large areas where they can be temporarily fenced or picketed. Water can be found by going back down the trail a short distance to the tributary of the stream flowing out of Little Rainbow Lake just off the trail to the southwest or by going up the trail to McIntyre Lake. Camping sites can also be found on the bench northwest of McIntyre Lake.

SEASONAL: Not accessible in winter, as Laramie River Road is not plowed.

The two unbridged crossings of McIntyre Creek (at 1.10 and 1.43 miles above the junction with the Rawah (N) Trail) may be challenging during high stream flows, even if you are prepared to wade.

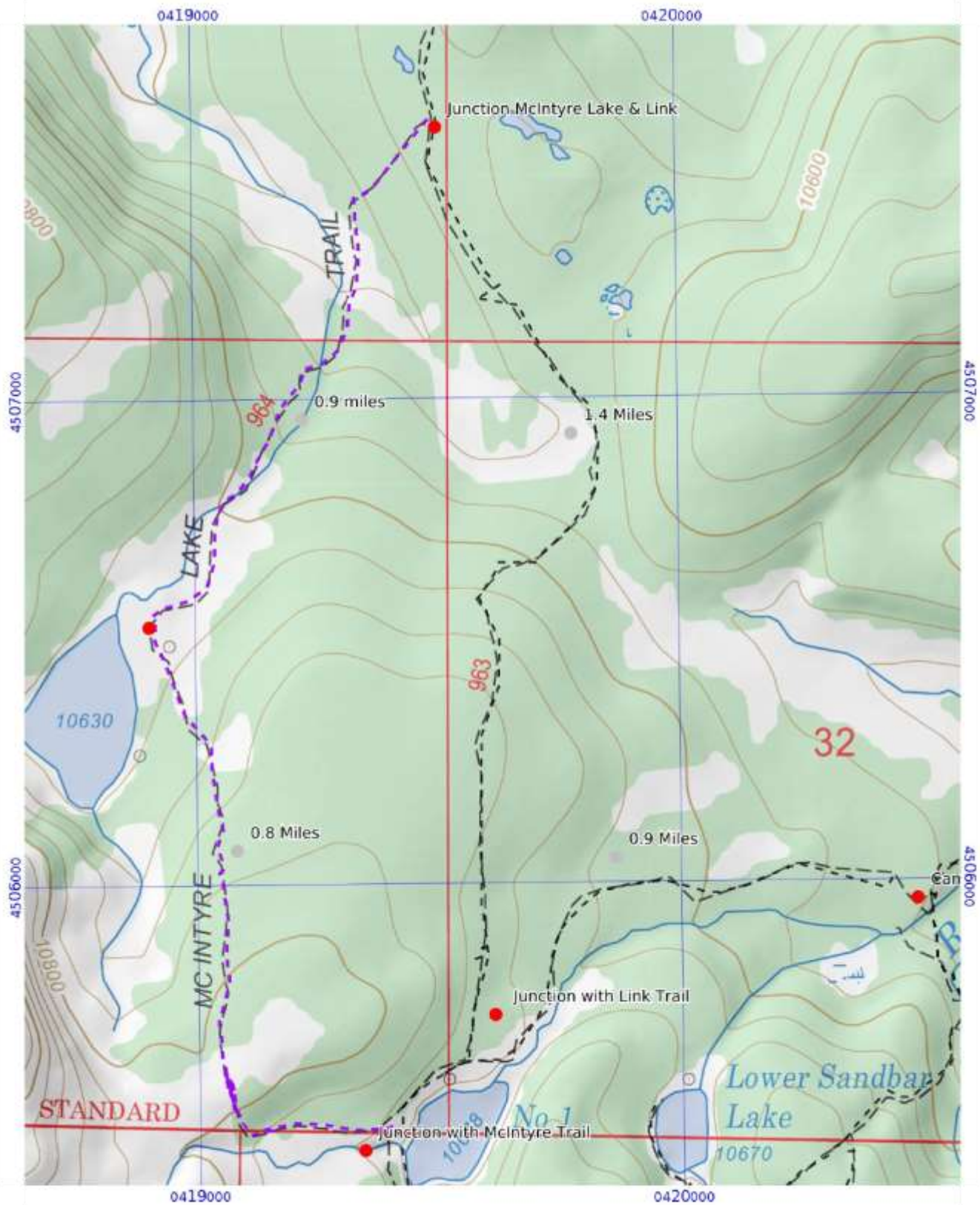
DESCRIPTION: This trail can be patrolled from either end. From the Link Trail, go right at the junction with the McIntyre Lake Trail, some 8.7 miles from the Link trailhead. The McIntyre Lake Trail drops into the McIntyre Creek drainage, before gently climbing 0.75 mile to McIntyre Lake. From the Lake the trail climbs gently up a north-facing ridge before dropping down and intersecting the Rawah Trail at Rawah Lake #1. About 0.1 mile above and to the southeast of the McIntyre Lake is a large bench area that is a good place to camp, with a large area for grazing livestock (see above). You can also find camping areas off the Link Trail along the edges of the McIntyre Burn before reaching the McIntyre Lake Trail.

REGULATIONS:

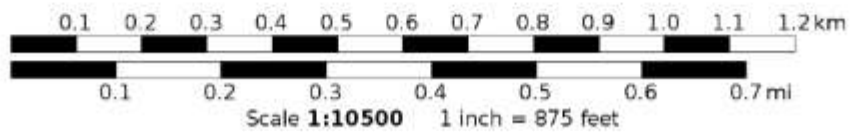
- Camping and Fires - Prohibited within 200 feet of water or trail. Wood fires prohibited above 10,800 feet elevation (Rawah Alpine Closure Area).
- Dogs - Must be on hand-held leash with hikers, voice control with stock.
- Stock - To avoid spreading noxious weeds, recommend beginning 72 hours prior to the ride stock feed should only be pellets or certified weed- free hay. Required: throughout the trip, any feed *must* be pellets or certified weed-free hay.
- Bicycles and Other Wheeled Conveyances - Prohibited.
- Motorized Transport and Equipment - Prohibited.
- Group Size - Maximum 12 people and stock, combined.

| GPS Coordinates: datum = WGS84 | Lat/Long | UTM | |
|--|------------------------|------------|-----------|
| "trailhead" at junction with Rawah Trail (North) | N40°41.78' W105°57.25' | 419385mE | 4505485mN |
| Possible large camping site | N40°41.70' W105°57.52' | 419000mE | 4505300mN |
| McIntyre Lake | N40°42.30' W105°57.61' | 418888mE | 4506453mN |
| end of trail at junction with Link Trail | N40°42.91' W105°57.19' | 419492mE | 4507575mN |

(See next page for map of trail.)



Mercator Projection
 WGS84
 UTM Zone 13T
 CalTopo



McIntyre Lake: 3