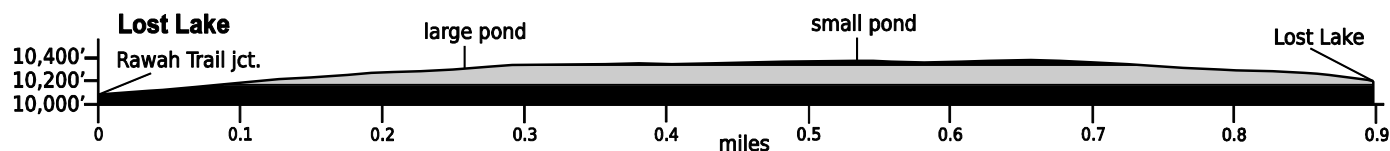


Dec. 30, 2020

Public Trail Information: Lost Lake

Trail(s): Lost Lake #982	
Ratings / restrictions:	Hikers – Moderate Stock riders – Moderate See complete regulations below DESCRIPTION.
Cautions:	None
Typically accessible:	Late June, after Laramie River Road is open for the season
Wilderness:	Rawah
One-Way Length:	0.9 mile (from junction with Rawah Trail (N) to Lost Lake)
Beginning / Peak Elevations:	10,093 / 10,389
Gain/Loss/Net Gain:	296/183/+113
Map(s) - Trails Illustrated:	#112 Poudre River Cameron Pass; Mountain Jay - Rawah Wilderness
Map(s) - USGS 7-½' Quadrangles:	Rawah Lakes



TRAIL LOCATION:

Rawah Wilderness Area: Lost Lake Trail is accessed from the Rawah Trail (North). See the Rawah Trail (North) trail description for details.

TRAIL: The trail corridor is open and the tread is well established and generally easy to follow. There are a few old USFS axe blazes in trees along the trail but no rock cairns. There is a boggy area, about 0.55 mile above the junction with the Rawah [N] Trail, which can be challenging to cross both because it is difficult to see and follow the trail’s path, and because the water is more than 1 ft deep in places.

WATER: Abundant - The large unnamed pond north of the trail and Lost Lake are the two best sources of water.

CAMPING: Plan to camp near but not too close to Lost Lake.

SEASONAL: Laramie River Road is not plowed, so the trailhead is not accessible in winter.

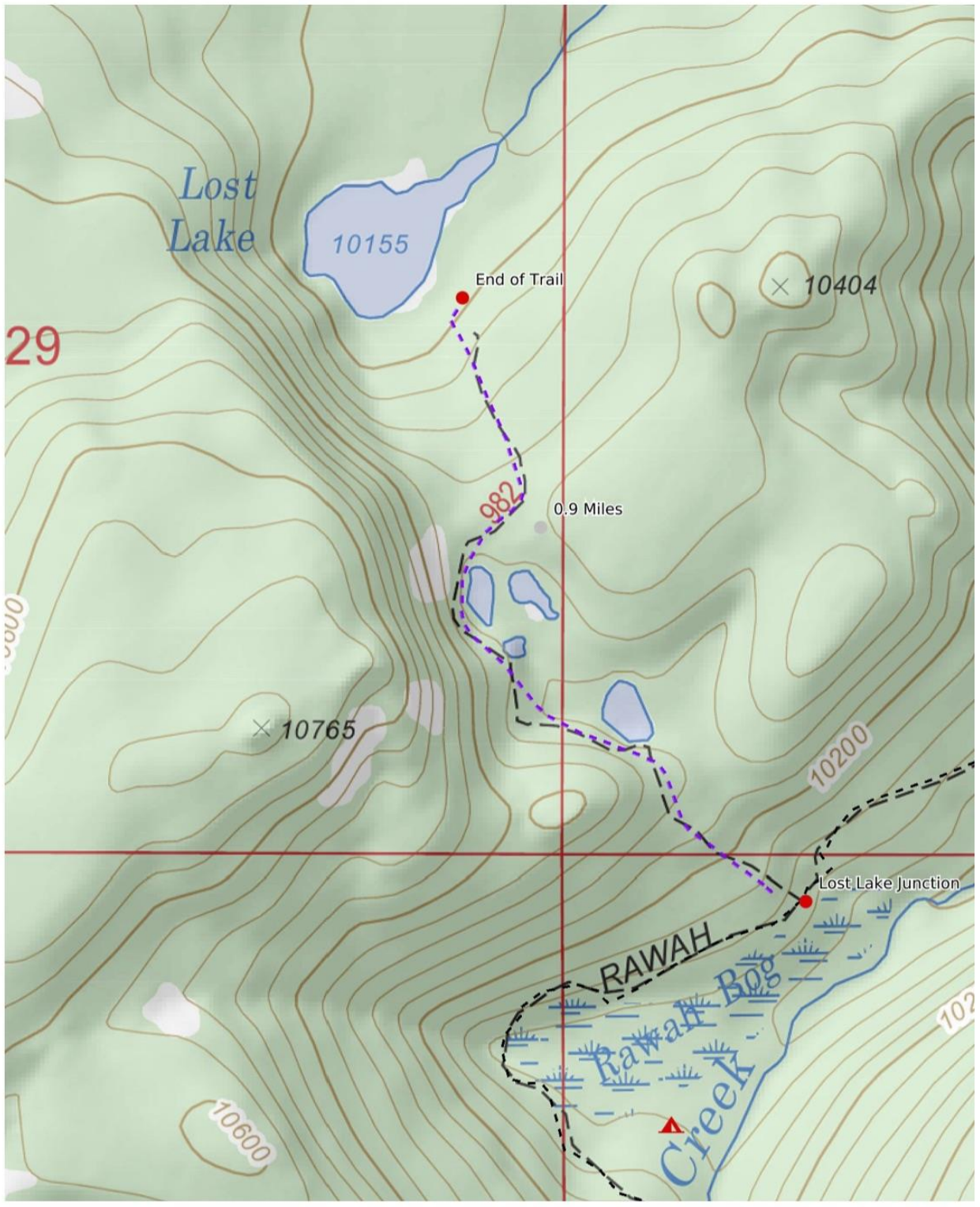
DESCRIPTION: The “trailhead” for the Lost Lake Trail is located about 5.6 miles up the Rawah Trail (North). See Rawah Trail (N) patrol description for more information). The Lost Lake Trail passes through an attractive lodgepole pine forest. The trail climbs steeply up the hillside to the northwest for about 0.25 mile before leveling off for the next 0.4 mile. It passes near one large pond (at 0.26 mile from the Lost Lake “trailhead”) and then two small, shallow ponds (at 0.53 mile from the trailhead) and then through a small boggy area. The trail descends the final 0.25 mile to Lost Lake. This beautiful subalpine lake has several interesting rock outcrops on its shoreline.

REGULATIONS:

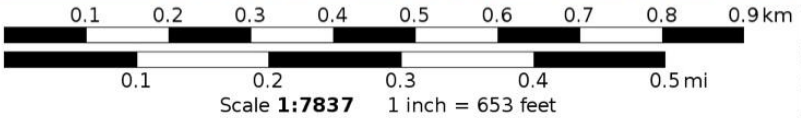
- Camping and Fires - Prohibited within 200 feet of water or trail.
- Dogs - Must be on hand-held leash with hikers, voice control with stock.
- Stock - To avoid spreading noxious weeds, recommend beginning 72 hours prior to the ride stock feed should only be pellets or certified weed free hay. Required: throughout the trip, any feed *must* be pellets or certified weed-free hay.
- Bicycles and Other Wheeled Conveyances - Prohibited.
- Motorized Transport and Equipment - Prohibited.
- Group Size - Maximum 12 people and stock, combined.

GPS Coordinates: datum = WGS84	Lat/Long	UTM
"trailhead" at junction with Rawah Trail (North)	N40°42.62' W105°55.75'	421514mE 4507017mN
large pond	N40°42.74' W105°55.93'	421262mE 4507241mN
small pond/bog	N40°42.87' W105°56.12'	421998mE 4507485mN
Lost Lake	N40°43.13' W105°56.16'	420946mE 4507966mN

(See next page for map of trail.)



Mercator Projection
 WGS84
 USNG Zone 13TDF
 CALTOPO



Lost Lake: 3