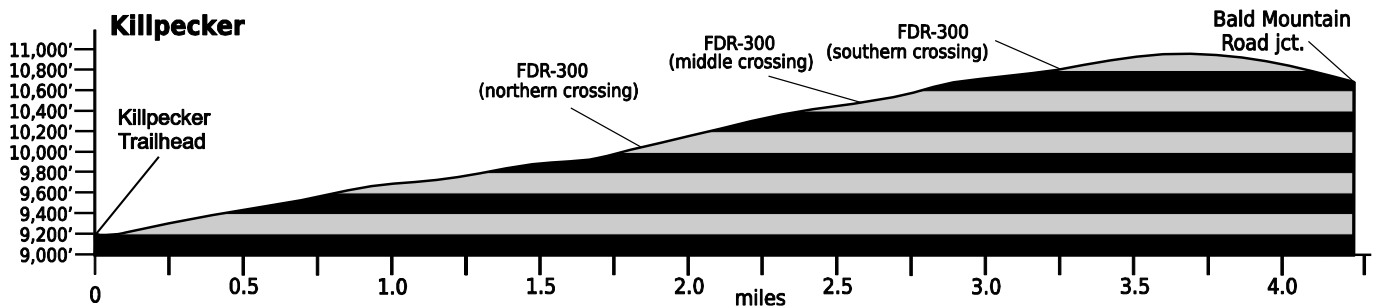


Trail(s): Killpecker #956	
Ratings / restrictions:	Hikers – Moderate/Difficult Stock riders – Difficult (very loose footing) Motorcycles and bicycles allowed See complete REGULATIONS below DESCRIPTION
Cautions:	Motorcycles and bicycles on trail
Typically accessible:	Mid-June, after Deadman Road is open for season
Wilderness:	None
One-Way Length:	4.2 miles (trailhead to junction with Bald Mountain Road)
Beginning / Peak Elevations:	9,150 / 10,982
Gain/Loss/Net Gain:	1,832/295/+1,537
Map(s) - Trails Illustrated:	#111 Red Feather Lakes Glendevey
Map(s) - USGS 7-½' Quadrangles:	South Bald Mountain



TRAILHEAD LOCATION:

Red Feather Lakes Area: From Ted's Place, drive north on US-287 for 10.5 miles to "The Forks" at Livermore, turn left and drive up the Red Feather Lakes Road (CR-74E) to the community of Red Feather Lakes. Just after passing the Pot Belly Restaurant, turn left onto Deadman Road (CR-86; unpaved). Follow Deadman Road for 7.2 miles to the trailhead on the south (left) side of the road (28.5 miles from "The Forks", and about 2.5 miles beyond the North Lone Pine trailhead). The parking area at the trailhead consists only of a small pull-out (room for 4 or 5 cars or 1 horse trailer and truck). The parking area and trailhead are located directly across from the sign for the North Fork Poudre Campground.

Toilets are available at the adjacent North Fork Poudre Campground, when open, just beyond the Killpecker Trailhead. No water and very limited parking at the trailhead.

Stock riders: There is only a small road pull-off at the Killpecker trailhead. Limited stock trailer parking is available at the North Lone Pine trailhead, but there is ample parking for stock trailers across the road from that trailhead, and also at the junction of Deadman Road with FR 300, ¼ mile past the North Lone Pine trailhead.

WATER: Limited The lower 1.5 miles of the trail parallels Killpecker Creek so water in this area is easy to get all year. The upper 2.5 miles has no reliable water sources.

CAMPING: There are several possible "dry camping" locations along the trail. Be sure to camp at least 100

feet from the trail and water. See REGULATIONS below.

SEASONAL: Deadman Road (CR-86) is closed in winter, so the trailhead is not accessible.

DESCRIPTION: The route of this trail is readily visible. The tread is wide and bare, with many loose rocks and debris that make for difficult footing, especially on steep inclines. The first part of the trail heads steadily uphill through a mature, mixed lodgepole pine – Douglas-fir forest along Killpecker Creek. There are two crossings of Killpecker Creek in the first 1.5 miles. After 1.5 miles the trail passes through a logged-over area shortly before crossing Killpecker Road (FDR-300) for the first of three times. When crossing Killpecker Road the first time, head left or southeast (downhill) for about 100 yds. There will be a carsonite marker on the right side of the road. Pick up the trail here. After a short but steady climb for about 0.3 mile, the trail goes past a spring that provides the last source of water along the trail. From here the trail turns west then back to the south to a ridge, where it will cross Killpecker Road once again, in another logged-over area. There is a large open area just below the second road crossing (FDR-300) that contains numerous fire rings and campsites.

The trail then continues to the south-southwest, crossing Killpecker Road a third and last time. Look for a marker south of the road indicating the continuation of the trail. From here the trail climbs a ridge along the northwest side of Middle Bald Mountain. A short detour off the trail to climb to the top of Middle Bald Mountain will reward you with panoramic views in all directions (Red Feather Lakes area, Mummy Range, upper Poudre Canyon, Rawah

and Medicine Bow mountains) and many varieties of wildflowers in this tundra area. From the ridge, the trail swings back to the south, drops downhill, and ends at the Bald Mountain Road (FDR-517). The trail ends at this location.

The south end of the Killpecker Trail has a wooden trail-type sign that reads: "Jct. Deadman Rd CR 162 - 4.2". There is a carsonite wand sign with trail regulation icons mounted on the sign post. There is

also a small (3 in by 4 in) galvanized/orange painted "956" trail reassurance marker.

If you choose to do both North Lone Pine and Killpecker trails as a loop, the distance is 9.1 miles plus the 2.5 miles between trailheads. The two trails can be connected at their southern ends by about 0.5 mile on Bald Mountain Road.

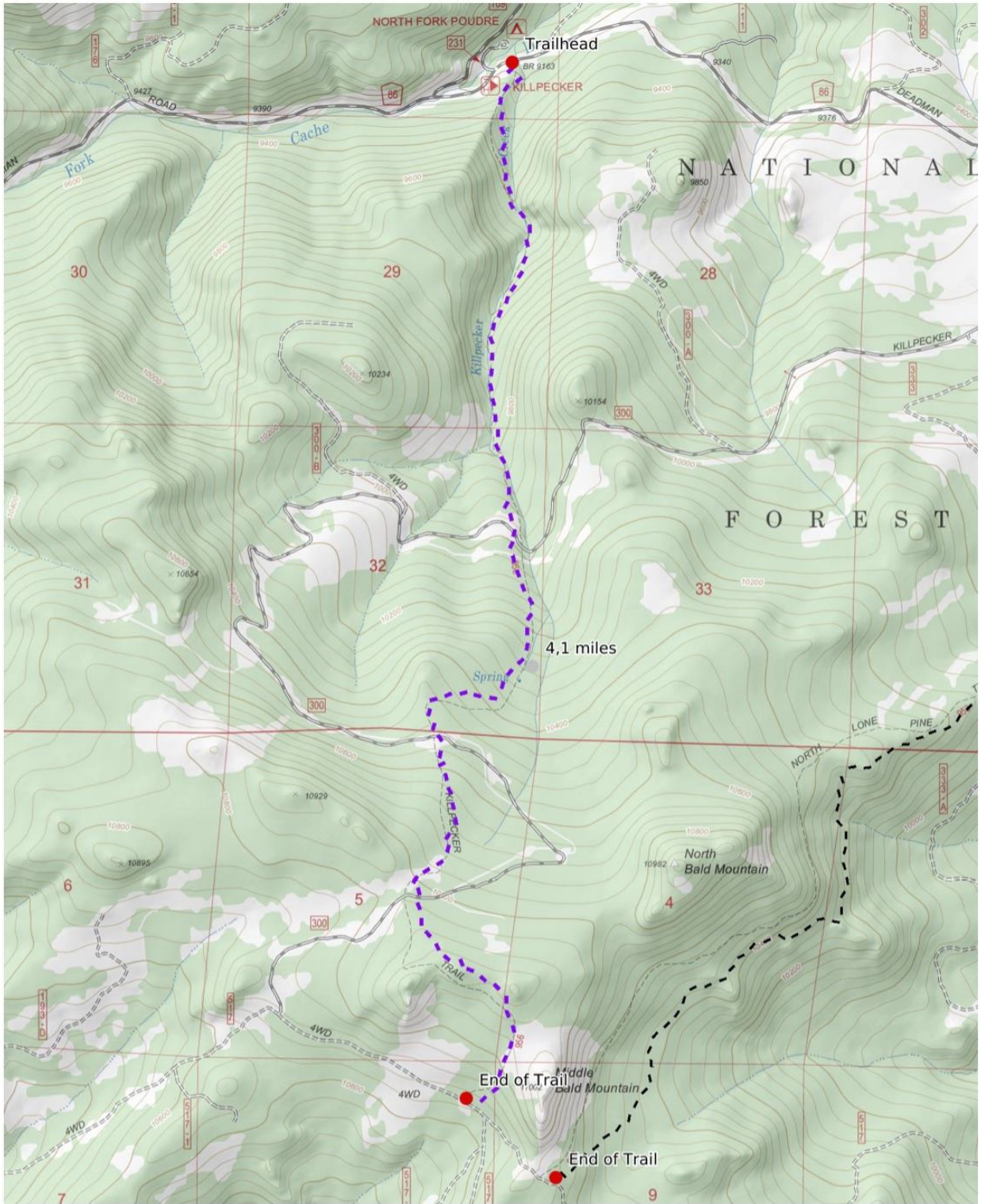
All mileages shown are approximate.

REGULATIONS:

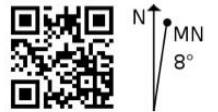
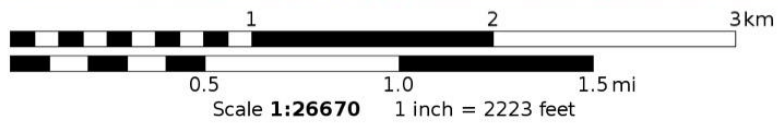
- Camping and Fires – Recommend at least 100 feet from water and trail; prohibited within 200 feet of trailhead and parking area.
- Dogs – Must be under voice control at all times.
- Stock - To avoid spreading noxious weeds, recommend beginning 72 hours prior to the ride, stock should be fed only pellets or certified weed-free hay. Required: throughout the trip, stock *must* be fed only pellets or certified weed-free hay.
- Bicycles and Other Wheeled Conveyances – Allowed.
- Motorized transport – Motorbikes only.
- Group Size - Any single group of more than 74 people must have a USFS permit.

Mileage	GPS Coordinates: datum = WGS84	Lat/Long	UTM	
0	trailhead (on Deadman Road; CR-86)	N40°48.82' W105°42.57'	440162mE	4518314mN
1.7	first (northern) crossing of Killpecker Road	N40°47.49' W105°42.56'	440156mE	4515854mN
2.6	second (middle) crossing of Killpecker Road	N40°46.92' W105°42.85'	439739mE	4514802mN
3.2	third (southern) crossing of Killpecker Road	N40°46.46' W105°42.92'	439634mE	4513952mN
4.2	end of trail at Bald Mountain Road (FDR-517)	N40°45.85' W105°42.69'	439948mE	4512821mN

(See next page for trail map.)



Mercator Projection
 WGS84
 USNG Zone 13TDF

Killpecker: 3