

**MINUTES**  
**PWV BOARD OF DIRECTORS MEETING**  
**January 20, 2011**

The meeting began at 6:30 p.m.

**ATTENDANCE**

**Board Members present:** Scott Ackerman, Kathy Burgess, Don Creager, Jan Creager, Jerry Hanley, Bob Hansen, Kathy Michaels, Meg Parmer, Mike Shaddy, Jim Shaklee, Margaret Shaklee, Kay Valerio, Laura Van Arsdale and Kevin Cannon (USFS Liaison)

**Board Members absent:** Amanda Henderson and Karl Ritters.

**Advisory Board members present:** Fred Allen, Chuck Bell, Bob Manuel, Betsy Mosehauer, Mike Mosehauer, Jacques Rieux, Mark Snyder and Wayne Tobey.

**PWV Members present:** Archy Archuleta, Linda Archuleta, Janet Cook, Kathy James and Randy Schroeder.

The draft **AGENDA** was presented, the only change was to reorder one item.

**MINUTES OF PREVIOUS BOARD MEETING.** *A motion to approve the December 16, 2010 Minutes made, seconded, and approved by unanimous vote.*

**TREASURER'S REPORT.** Margaret Shaklee presented the Treasurer's Report, and there was little discussion. She highlighted the current bank account balances and recent modifications to the "other current assets" section of the Balance Sheet via two journal entries (as noted in the Transactions Report) done by Kathy Burgess. *A motion to approve the December 31, 2010 Treasurer's Report was made, seconded, and approved by unanimous vote.*

**FOREST SERVICE REPORT.** There were no questions regarding the report circulated earlier. Kevin Cannon did provide an update regarding an initial facilities diagram for the planned upgrades at the Stub Creek site (available to USFS staff and volunteers only). He noted that planned enhancements will not occur in 2011.

**RECENT ANNOUNCEMENTS and INFORMATION SHARING.** No discussion.

**MEMBER AT LARGE.** Don Creager received an email from one new member who wanted winter patrols to count toward the 6-patrol commitment. Jim Shaklee noted that this matter is on the list of 29 items to be prioritized and dealt with this year by the "Plan for the Future" *ad hoc* workgroup.

**UNFINISHED BUSINESS:**

**RECORDING/REPORTING NON-PATROL HOURS.** Kevin Cannon keeps track of hours the Board members spend attending the monthly Board meetings, including their travel times. Other time spent on non-patrol matters (including preparing for and doing Board work outside of Board meetings; attending and traveling to Executive Committee meetings, preparing for, attending, and doing work outside of Executive Committee meetings; and Committee meetings, work, and travel) should be reported as "Non-Patrol Activity" using the USFS-PWV Patrol Scheduling and Reporting website for tracking by Kevin and USFS records. Such reporting can be done monthly or quarterly.

**FUNDRAISING COMMITTEE.** Jim Shaklee reported on Peter Odenbach's proposal for fundraising and stated Peter would accept the committee chair position. Fred Allen, who has been the primary PWV fundraiser over the past several years, welcomes Peter's chairmanship and is happy to work with him in future fundraising. Fred stated he would still continue with the corporate donors. Discussion indicated that the Board was in favor

of redefining the focus and scope of this committee as per Peter's proposal. ***Motion that Peter be appointed Chair of the Fundraising Committee was made, seconded and carried unanimously.***

**RESULTS OF GOALS and OBJECTIVES EXERCISE.** Jim presented a slide showing the results of the exercise at the December Board meeting, stating that this was a great start but there is lots of work yet to be done. He also showed a slide listing an additional 10 potential goal themes that had not been submitted during the exercise. He invited members to come forward to work in the Goals and Objectives *ad hoc* workgroup.

### **NEW BUSINESS:**

**FRIENDS OF MT. EVANS & LOST CREEK WILDERNESS (FOMELC).** Several PWVs (including Dave Cantrell [in his role with the National Wilderness Stewardship Alliance] and Fred Allen) have had contact with Mike Israel/FOMELC recently. There was discussion on how to best assist FOMELC. It was noted that a fair amount of information about PWV's structure and operations (including a copy of the PWV Field Guide) has already been given to FOMELC during the past year. A recommendation from the Executive Committee that PWV offer support to FOMELC by inviting 10-20 of their members/recruits to participate in PWV's Spring Training was presented to the Board. The Board enthusiastically supported this approach and suggested that Mike Israel also be invited to attend PWV's Open House, Kick-off Night, and other PWV events as a representative of FOMELC. The Board also supported the suggestion to offer to provide a copy of the PWV Organizational Handbook (still in draft). It was the consensus of this meeting that PWV should not take the initiative generally with FOMELC, but that we would be willing to assist where our guidance and expertise is asked and needed. There was also some discussion regarding the idea of support by providing mixed mentor patrols (a PWV mentor with 1 or 2 FOMELC members) and how this might be most effectively done. The option of individual PWV members providing additional support for FOMELC was recognized and supported by the Board. Jim Shaklee said that he will contact Mike to update him regarding the Board's decision to support FOMELC via participation in our Spring Training and some other options.

**LOCATION FOR SPRING TRAINING, 2011.** Kathy James and Bob Manuel reported on the possible use of the Cub Scout Camp near Red Feather Lakes for PWV's 2011 Spring Training, and presented the pros and cons in written form. There were numerous benefits for using the Camp, not the least of which is no charge to PWV. After some discussion, a ***motion to use the Cub Scout Camp for 2011 Spring Training was made, seconded, and unanimously approved.***

### **ANIMAL GROUP LEADERS NEEDED FOR SPRING TRAINING.**

Kathy James would like anyone desiring to be an animal group leader to contact her as soon as possible.

**TRAIL PATROLLING PRIORITIES.** Jim Shaklee gave a report and slide presentation [see attachment A] regarding a recommendation from Frank Lilley, Chuck Bell, and Jim to revise PWV's current trail usage information and trail patrolling priorities based on data in PWV trail patrol reports (3,952 reports from 2006-2010). Trail patrolling priority scores were calculated based on nine different measures (derived from usage statistics, trail characteristics, observed violations, and reported trail and campsite maintenance activities). Each trail was then assigned a priority (High, Medium, or Low) based on its aggregate priority score (a single priority, not separate categories for each patrolling mode as had been done in the past). Jim also presented data comparing the recommended priority patrolling level for each trail with the actual level achieved over the past five years. These comparisons revealed a substantial number of examples of substantial over-patrolling (by up to 18-fold) and under-patrolling (by 80 to 90%). The intent of developing and promoting the proposed new patrolling priorities is to obtain a closer match between PWV's patrolling activities and the actual needs of the trails and opportunities to promote LNT and positive land stewardship by the trail-using public. ***A motion that we ask members to patrol at least 4 high or medium trails each year as part of their 6-patrol commitment was made, seconded and approved (12 votes for and 1 vote opposed).*** The Board encouraged communication of the new patrolling priorities and the above statement to members via the 2011 Field Guide, upcoming PWV

member training opportunities, and other appropriate avenues. Mike Mosehauer suggested that assigning importance/quality scores (e.g., 1, 2, or 3) to trail patrols based on their identified priority class and then combining these values with the trails patrolled by each member during the year would be a good measure of each member's patrolling contribution. The results would then be used to identify year-end patrolling award winners instead of the simple count of the number of trails patrolled by each member as has been done previously. This would be a good way to emphasize to our members the desirability and need to place more emphasis on patrolling high and medium priority trails and encourage less patrolling on low priority trails. Jim also presented data derived from the 2005-2010 trail patrol reports showing a progressive 20% decline in the average duration of trail patrols over the past five years.

**ANNUAL PATROL COMMITMENT. (Six days or ??)** Jim Shaklee suggested that the current expectation does not account for, or encourage, members who do or could make significant contributions to PWV and its mission via non-patrol activities and that this is a shortcoming of the current statement. Further, the above-mentioned trend of declining trail patrol duration suggests another weakness of defining an expected member commitment based entirely on a specified number of patrols. After some discussion of this issue, the consensus of the Board was to leave PWV's current statement that PWV expects members to conduct 6 trail patrols annually unchanged for now, but to revisit this matter at a future time.

**STATUS OF AD HOC COMMITTEES, MEMBERS & LEADERS.** Not covered at this meeting.

**CHARGING NEW RECRUITS A \$50 FEE** (Costs for uniform shirt, name badge, meals at Spring Training). Kathy James suggested charging new members a one-time \$50 fee to cover the costs of the shirt, name badge and meals at Spring Training. She encounters numerous problems with some new recruits not following through with their commitments to join PWV after expenditures have been made on their behalf, the losses we incur, receiving so many checks in partial amounts for these items or not receiving checks, making it a logistical nightmare for her. Fred Allen added that he believes our actual cost to bring in a new recruit is \$80. Much discussion followed. Some members felt there should be no charge for these items when joining PWV and others felt the opposite. As well, there were comments that the \$50 charge should be identified as an "expense" and itemized: \$20 shirt, \$20 meals, and \$10 name badge, which is more accurate, more understandable and acceptable to new recruits. ***A motion to charge each new recruit \$10, non-refundable, for a name badge was made and seconded. It passed with 10 votes for and 2 against.*** Any remaining questions/issues regarding charges for Spring Training and their mode of payment will need to be resolved sometime in the future.

The meeting adjourned at 9:00 pm.

Meg K. Parmer, Secretary

Next Board Meeting: **February 17, 2011**

Attachment A

# Trail Usage by the Public (based on observations in PWV patrol reports 2006-2010)

Day Hikers:		# seen/patrol
# patrols	Day Hikers	
Lion Gulch	141	29.70
Greyrock (loop hike to summit)	144	29.56
Lily Mountain	132	24.67
Young Gulch	186	19.08
North Fork	261	17.11
Emmaline Lake	73	14.36
Hewlett Gulch	229	12.98
Big South	123	10.59
Round Mountain	90	10.58
Pawnee Buttes	18	9.72
Crosier Rainbow	37	8.59
Blue Lake	79	7.95
Crosier Mountain (Glen Haven)	71	6.63
Stormy Peaks	28	6.25
Lower Dadd Gulch	116	6.22
Crosier Mountain (Garden Gate)	50	5.91
Zimmerman Lake	78	5.72
Montgomery Pass	116	5.68
Mt. Margaret	199	5.65
Mummy Pass	26	5.38
Trap Park	130	5.31
Mt. McConnel & Kreutzer Nature	85	5.27
Roaring Creek	85	5.25
Browns Lake	80	4.71
West Branch	113	4.37
Bulwark Ridge	22	4.27
Camp Lake & Upper Camp Lake	29	4.17
Corral Creek & Upper Big South	67	3.49
Little Beaver Creek	114	3.32
North Lone Pine	58	2.83
Hourglass	7	2.71
Comanche Lake	40	2.70
Fish Creek	82	2.67
Killpecker	34	2.65
Flowers	51	2.61
Granite Ridge (aka Molly Lake)	238	2.48
Beaver Creek	27	2.37
Lady Moon	193	2.24
Rawah (South)	22	1.77
Lost Lake	3	1.67
McIntyre	56	1.63
Signal Mountain	31	1.61
Zimmerman (North)	19	1.42
Zimmerman (South)	37	1.14
McIntyre Creek	20	1.05
Brackenbury Cabin	9	1.00
Link	25	0.84
Rawah (North)	31	0.68
Twin Crater Lakes	10	0.30
McIntyre Lake	8	0.25
Mirror Lake	8	0.00
Medicine Bow (South)	11	0.00
Medicine Bow (North)	5	0.00
Big Rainbow, Sandbar Lakes	5	0.00
<b>3,952</b>		
HIGH =	<b>13</b>	
Medium =	<b>16</b>	
low =	<b>25</b>	

Backpackers:		# seen/patrol
# patrols	Backpackers	
West Branch	113	8.77
North Fork	261	7.40
Camp Lake & Upper Camp Lake	29	7.31
Emmaline Lake	73	6.82
Rawah (South)	22	6.68
Blue Lake	79	5.32
Rawah (North)	31	4.06
Comanche Lake	40	3.98
Browns Lake	80	3.88
McIntyre Lake	8	3.63
Twin Crater Lakes	10	3.30
Beaver Creek	27	3.11
Corral Creek & Upper Big South	67	2.88
Big South	123	2.31
Mummy Pass	26	2.04
McIntyre	56	1.93
Big Rainbow, Sandbar Lakes	5	1.80
Flowers	51	1.63
Hourglass	7	1.57
Link	25	1.52
Little Beaver Creek	114	1.46
Roaring Creek	85	1.44
Zimmerman Lake	78	1.26
Greyrock (loop hike to summit)	144	1.22
McIntyre Creek	20	1.20
Lion Gulch	141	1.11
Fish Creek	82	0.98
Signal Mountain	31	0.97
Lost Lake	3	0.67
Medicine Bow (South)	11	0.64
Young Gulch	186	0.59
Killpecker	34	0.51
Trap Park	130	0.52
Zimmerman (South)	37	0.51
Bulwark Ridge	22	0.45
Stormy Peaks	28	0.32
Round Mountain	90	0.31
Granite Ridge (aka Molly Lake)	238	0.29
Mt. Margaret	199	0.27
Montgomery Pass	116	0.25
Lady Moon	193	0.22
Zimmerman (North)	19	0.21
Medicine Bow (North)	5	0.20
Pawnee Buttes	18	0.17
Hewlett Gulch	229	0.15
Crosier Mountain (Garden Gate)	50	0.13
Lower Dadd Gulch	116	0.10
Crosier Mountain (Glen Haven)	71	0.07
Mt. McConnel & Kreutzer Nature	85	0.04
Crosier Rainbow	37	0.03
Lily Mountain	132	0.03
North Lone Pine	58	0.02
Brackenbury Cabin	9	0.00
Mirror Lake	8	0.00
<b>3,952</b>		
HIGH =	<b>15</b>	
Medium =	<b>13</b>	
low =	<b>26</b>	

Horse Riders:		# seen per patrol		
# patrols	Horses	Stock Riders	Outfitters	
North Fork	261	4.16	4.13	0.03
Flowers	51	3.22	3.22	0.00
Little Beaver Creek	114	1.93	1.92	0.01
Mt. Margaret	199	1.63	1.62	0.01
Lady Moon	193	1.53	1.49	0.04
Camp Lake & Upper Camp Lake	29	1.45	1.28	0.17
McIntyre Lake	8	1.25	1.25	0.00
McIntyre	56	1.22	1.02	0.20
Fish Creek	82	1.21	1.21	0.00
McIntyre Creek	20	1.15	0.75	0.40
Granite Ridge (aka Molly Lake)	238	1.13	1.03	0.10
Beaver Creek	25	1.12	1.04	0.08
Rawah (North)	31	1.03	1.03	0.00
Lion Gulch	141	0.92	0.92	0.00
West Branch	113	0.91	0.84	0.07
Browns Lake	80	0.41	0.38	0.03
Zimmerman (South)	37	0.41	0.27	0.14
Crosier Rainbow	37	0.35	0.35	0.00
Comanche Lake	40	0.35	0.35	0.00
Hourglass	7	0.29	0.29	0.00
Crosier Mountain (Glen Haven)	71	0.20	0.20	0.00
Twin Crater Lakes	10	0.20	0.20	0.00
Beaver Creek	27	0.15	0.15	0.00
Trap Park	130	0.15	0.13	0.02
Lower Dadd Gulch	116	0.13	0.12	0.01
Hewlett Gulch	229	0.11	0.11	0.00
Zimmerman (North)	19	0.11	0.11	0.00
Pawnee Buttes	18	0.11	0.11	0.00
North Lone Pine	58	0.10	0.10	0.00
Bulwark Ridge	22	0.09	0.09	0.00
Rawah (South)	22	0.09	0.09	0.00
Killpecker	34	0.09	0.09	0.00
Young Gulch	186	0.08	0.08	0.00
Signal Mountain	31	0.06	0.06	0.00
Blue Lake	79	0.05	0.05	0.00
Greyrock (loop hike to summit)	144	0.04	0.01	0.03
Lily Mountain	132	0.02	0.02	0.00
Roaring Creek	85	0.02	0.02	0.00
Corral Creek & Upper Big South	67	0.01	0.01	0.00
Montgomery Pass	116	0.01	0.01	0.00
Crosier Mountain (Garden Gate)	50	0.00	0.00	0.00
Round Mountain	90	0.00	0.00	0.00
Mt. McConnel & Kreutzer Nature	85	0.00	0.00	0.00
Brackenbury Cabin	9	0.00	0.00	0.00
Emmaline Lake	73	0.00	0.00	0.00
Mummy Pass	26	0.00	0.00	0.00
Mirror Lake	8	0.00	0.00	0.00
Stormy Peaks	28	0.00	0.00	0.00
Big South	123	0.00	0.00	0.00
Zimmerman Lake	78	0.00	0.00	0.00
Medicine Bow (South)	11	0.00	0.00	0.00
Medicine Bow (North)	5	0.00	0.00	0.00
Lost Lake	3	0.00	0.00	0.00
Big Rainbow, Sandbar Lakes	5	0.00	0.00	0.00
<b>3,952</b>				
HIGH =	<b>6</b>	<b>6</b>		
Medium =	<b>9</b>	<b>9</b>		
low =	<b>39</b>	<b>39</b>		

# **New Priorities for Trail Patrols**

**Goal: Focus PWV efforts on the trails needing the most protection & stewardship**

Trail patrol priorities haven't been significantly altered since they were first established in 2002 (when, for the lack of data, they were based on the knowledge and experience of two PWVs)

- **Match our patrol effort to our mission**
- **Increase patrol effort on high-use, high-violation, inappropriate-use trails**
- **Reduce patrol effort on low-use, minimal-problem trails**
- **Identify a single priority for each trail (not 3 separate priorities)**
- **Use an objective, data-driven process**

## **Approach:**

**Used data from PWV trail patrol reports 2006-2010 (N = 3,952)**

**Identified 'concerns' and 'measures' re PWV Mission and goals**

**Decided on appropriate weighting factors for measures**

**"Cleaned" the existing trail patrol data**

**Calculated patrol priority scores**

**Reviewed results and modify model as appropriate**

**Assigned trails to priority classes based on their priority scores**

**(HIGH, Medium, or low")**

# Concerns & Measures

- **A Use of trail by the public**
- **B Amount of camping**
- **C Number and complexity of regulations / Nature's needs**
- **D Number / Amount of violations & maintenance**

**A-1 # of Trail Users – opportunities to educate & assist (39%)**

**A-2 & B-1 # of Backpackers – indirect measure of camping (11%)**

**B-2 & C-1 Lakes & Streams – indirect measure of camping & Nature's Needs (14%)**

**C-2 Special Regulations – education needs & opportunities (7%)**

**D-1 # of Fire Rings rehabilitated – LNT, set a good example (6%)**

**D-2 # of Fire Rings removed – LNT, set a good example (7%)**

**D-3 lbs Trash removed – LNT, set a good example (5%)**

**D-4 # Dogs Off Leash [when a violation] – education need (5%)**

**D-5 # Improper Campsites – LNT, set a good example (7%)**

# Coding of Trail Patrol Features

## Lakes & Streams

**0 = no water**

**2, 3, or 4 = small stream**

**5 = stream or single lake**

**8 = 2 lakes**

**10-12 = 3 or more lakes**

## Special Regulations

**0 = none**

**3 = established campsites or no bicycles**

**6 = <50% Wilderness**

**9 = Wilderness or special regs**

**12 = Wilderness + TZ or special regs**

*(number divided by 2 for scoring)*

Trail priority calculator v2.xls

$$\text{priority score} = (\# \text{ seen/patrol}) + (\text{backpackers}) + (\text{lakes/streams}) + (0.5 \times \text{special regs}) + (3 \times \text{FR rehabilitated}) + (5 \times \text{FR removed}) + (1 \times \text{lbs trash}) + (4 \times \text{dogs off leash}) + (8 \times \text{improper campsites})$$

weighting factor =	1	1	1	0.5	3	5	1	4	8
highest observed value =	32.60	8.80	12.00	12.00	1.54	1.10	3.75	1.08	0.74
highest possible score =	32.60	8.80	12.00	6.00	4.61	5.48	3.75	4.31	5.94
highest observed contribution to Priority SCORE =	39.0%	10.5%	14.4%	7.2%	5.5%	6.6%	4.5%	5.2%	7.1%

sorted using priority score

Stock	Trail Patrol	# patrols	Priority SCORE	# seen/patrol	backpackers	lakes/streams	special regulations	average MAINTENANCE / VIOLATIONS per patrol				
								fire rings rehabilitated	fire rings removed	lbs of trash	dogs off leash	improper campsite
	North Fork	261	56.2	30.9	7.4	7	12	0.05	0.24	0.44	0.63	0.08
P	Emmaline Lake	73	50.9	21.8	6.8	10	12	0.15	0.18	0.35	0.90	0.12
	West Branch	113	49.0	15.1	8.8	10	12	0.13	0.67	0.38	0.58	0.33
P	Greyrock (loop incl. summit)	144	47.3	31.5	1.2	2	9	0.06	0.34	0.70	1.08	0.15
P	Blue Lake	79	43.0	14.1	5.3	8	12	0.05	0.62	0.36	0.71	0.39
	Camp Lake & Upper Camp Lake	29	42.9	13.8	7.3	8	9	0.14	0.59	1.24	0.83	0.17
	Rawah (North)	31	42.5	6.1	4	12	12	0.19	1.10	0.88	0.39	0.74
NR	Big South	123	36.6	15.1	2.3	5	12	0.22	0.64	0.38	0.75	0.11
	Lion Gulch	141	35.7	32.6	1.1	0	0	0.01	0.08	1.15	0.00	0.06
	Browns Lake	80	35.2	10.7	3.9	7	12	0.04	0.60	0.55	0.74	0.13
	Young Gulch	186	33.8	22.4	0.6	4	5	0.11	0.22	0.90	0.00	0.25
	McIntyre Lake	8	32.6	5.5	3.6	8	9	0.63	0.38	1.25	0.50	0.50
NR	Comanche Lake	40	32.0	9.3	4	5	12	0.15	0.88	0.45	0.35	0.13
	Rawah (South)	22	31.6	9.6	6.7	3	9	0.05	0.32	0.09	0.68	0.41
	Beaver Creek	27	30.6	6.6	3.1	7	9	1.54	0.48	0.04	0.22	0.19
	Twin Crater Lakes	10	28.7	3.8	3.3	8	12	0.40	0.70	0.10	0.10	0.30
	Big Rainbow, Sandbar Lakes	5	27.3	2.6	2.8	12	9	0.00	0.40	0.20	0.00	0.40
	Corral Creek & Upper Big South	67	27.2	8.4	2.9	5	12	0.04	0.40	0.26	0.27	0.18
NR	Lily Mountain	132	25.0	24.8	0.03	0	0	0.00	0.00	0.19	0.00	0.00
	Hewlett Gulch	229	24.1	18.2	0.2	4	0	0.01	0.08	0.63	0.00	0.08
	Little Beaver Creek	114	22.0	7.5	1.5	4	9	0.04	0.26	0.51	0.42	0.11
	Lost Lake	3	21.2	4.3	0.7	5	9	0.00	0.67	3.33	0.00	0.00
	Zimmerman Lake	78	20.3	9.8	1.3	5	0	0.15	0.45	1.01	0.00	0.06
	McIntyre	56	19.6	5.7	1.9	5	9	0.05	0.13	0.13	0.21	0.09
	Mirror Lake	8	18.1	0	0	4	9	0.00	0.38	3.75	0.00	0.50
	Mummy Pass	26	17.8	7.7	2	0	9	0.08	0.27	0.19	0.38	0.04
	Flowers	51	17.8	8	1.6	0	9	0.10	0.10	0.32	0.37	0.14
NR	Roaring Creek	85	17.0	7	1.4	4	5	0.06	0.24	0.38	0.00	0.05
	McIntyre Creek	20	16.1	4.5	1.2	4	9	0.00	0.25	0.08	0.15	0.00
	Fish Creek	82	15.6	5.1	1	4	6	0.00	0.20	0.15	0.21	0.07
	Hourglass	7	15.6	5.6	1.6	2	9	0.00	0.14	0.00	0.00	0.14
	Link	25	14.3	5.5	1.5	0	9	0.00	0.12	0.32	0.48	0.00
	Trap Park	130	13.5	8.3	0.5	4	0	0.02	0.05	0.32	0.00	0.01
	Mt. Margaret	199	12.4	9.6	0.3	0	3	0.02	0.07	0.25	0.00	0.05
	Stormy Peaks	28	12.2	6.6	0.3	0	9	0.04	0.07	0.21	0.04	0.00
	Bulwark Ridge	22	11.9	4.8	0.5	0	9	0.05	0.09	0.23	0.14	0.09
	Pawnee Buttes	18	11.9	10	0.2	0	0	0.06	0.00	0.61	0.11	0.06
NR	Round Mountain	90	11.8	11	0.3	0	0	0.02	0.03	0.29	0.00	0.00
	Signal Mountain	31	11.6	2.7	0.9	2	9	0.00	0.16	0.10	0.10	0.03
	Lower Dadd Gulch	116	11.6	8.8	0.1	2	0	0.04	0.05	0.36	0.00	0.00
P	Mt. McConnel & Kreutzer Nature	85	10.7	5.5	0	0	9	0.00	0.02	0.16	0.08	0.01
	Crosier Rainbow	37	10.7	9.7	0	0	0	0.00	0.11	0.20	0.00	0.03
	Zimmerman (South)	37	8.3	2.5	0.5	0	9	0.00	0.00	0.24	0.08	0.03
	Medicine Bow (North)	5	8.1	0.6	0.2	0	9	0.00	0.00	0.40	0.20	0.20
	Medicine Bow (South)	11	8.1	1	0.6	0	9	0.09	0.09	0.55	0.00	0.09
	Crosier Mountain (Glen Haven)	71	8.0	7.7	0.1	0	0	0.00	0.01	0.12	0.00	0.00
	Killpecker	34	7.7	5.2	0.6	0	0	0.03	0.06	1.29	0.00	0.03
NR	Crosier Mountain (Garden Gate)	50	7.6	6.9	0.1	0	0	0.00	0.08	0.04	0.00	0.02
	Montgomery Pass	116	7.4	6.7	0.3	0	0	0.00	0.02	0.35	0.00	0.00
	North Lone Pine	58	7.2	3.6	0	2	0	0.00	0.07	0.12	0.00	0.14
	Zimmerman (North)	19	6.6	1.8	0.2	2	0	0.05	0.11	0.63	0.32	0.00
	Granite Ridge (aka Molly Lake)	238	5.0	4.1	0.3	0	0	0.03	0.03	0.29	0.00	0.00
	Brackenbury Cabin	9	4.6	0.1	0	0	9	0.00	0.00	0.00	0.00	0.00
	Lady Moon	193	4.6	4.1	0.2	0	0	0.00	0.03	0.09	0.00	0.01

All values used in the Trail Priority Calculator (except those for Lakes/Streams and Special Regulations) were obtained from PWV trail patrol reports 2006-2010 (total of 3,952 reports used)

Trails where stock are prohibited or not recommended are identified at far left



# Priorities for Trail Patrols

## HIGH PRIORITY

- Beaver Creek
- Big Rainbow & Sandbar Lakes
- \* Big South
- \*\* Blue Lake
- Browns Lake
- Camp Lake & Upper Camp Lake
- \* Comanche Lake
- Corral Creek & Upper Big South
- \*\* Emmaline Lake
- \*\* Greyrock (loop incl. summit)
- Hewlett Gulch
- \* Lily Mountain
- Lion Gulch
- McIntyre Lake
- North Fork
- Rawah (North)
- Rawah (South)
- Twin Crater Lakes
- West Branch
- Young Gulch

## Medium Priority

- Bulwark Ridge
- Crosier Rainbow
- Fish Creek
- Flowers
- Hourglass
- Link
- Little Beaver Creek
- Lost Lake
- Lower Dadd Gulch
- McIntyre
- McIntyre Creek
- Mirror Lake
- Mt. Margaret
- \*\* Mt. McConnel & Kreutzer Nature
- Mummy Pass
- Pawnee Buttes
- \* Roaring Creek
- \* Round Mountain
- Signal Mountain
- Stormy Peaks
- Trap Park
- Zimmerman Lake

## low priority

- Brackenbury Cabin
- \* Crosier Mountain (Garden Gate)
- Crosier Mountain (Glen Haven)
- Granite Ridge (formerly Molly Lake)
- Killpecker
- Lady Moon
- Medicine Bow (North)
- Medicine Bow (South)
- Montgomery Pass
- North Lone Pine
- Zimmerman (North)
- Zimmerman (South)

\* = *patrolling on horseback not recommended*

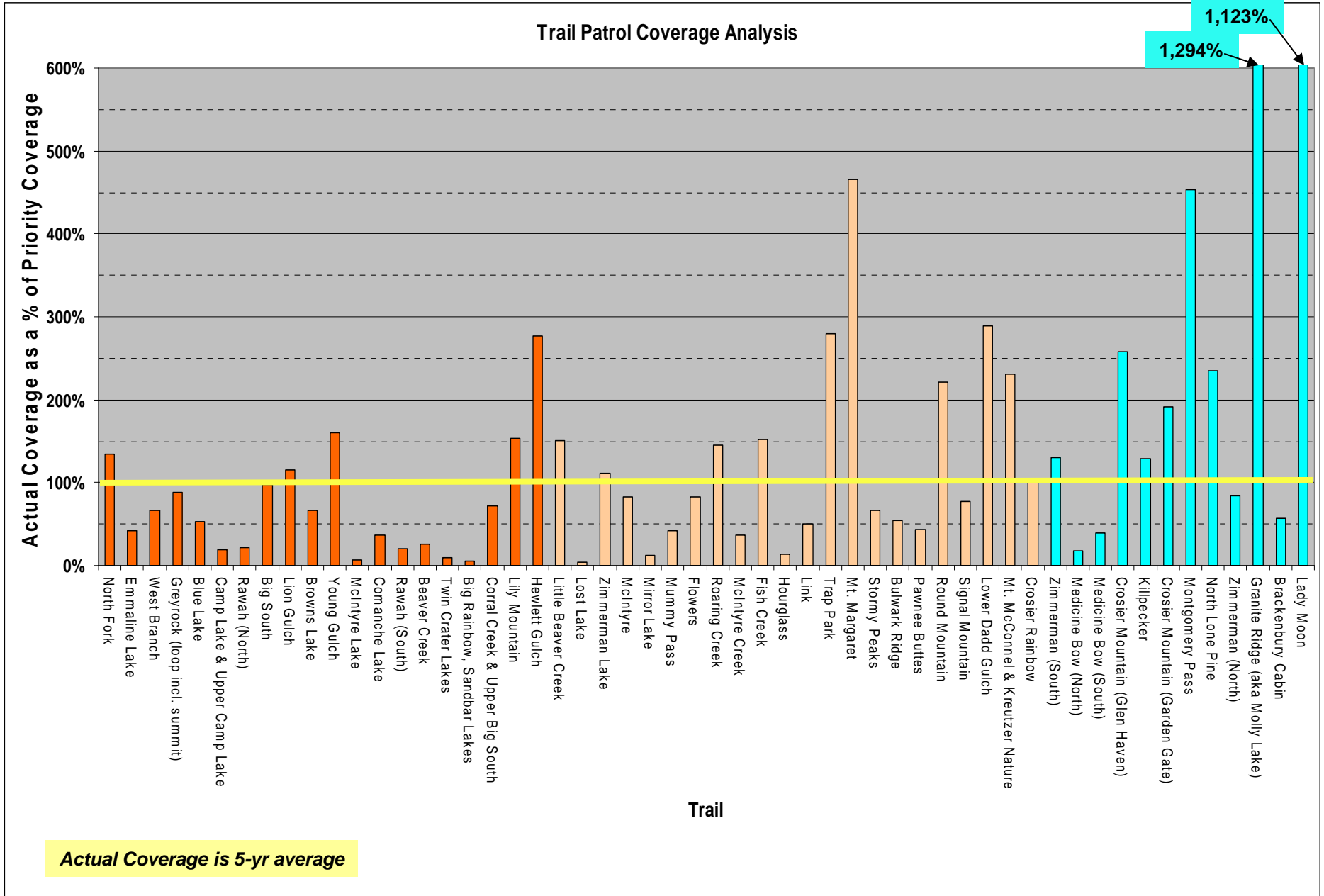
\*\* = *stock prohibited*

sorted using priority score

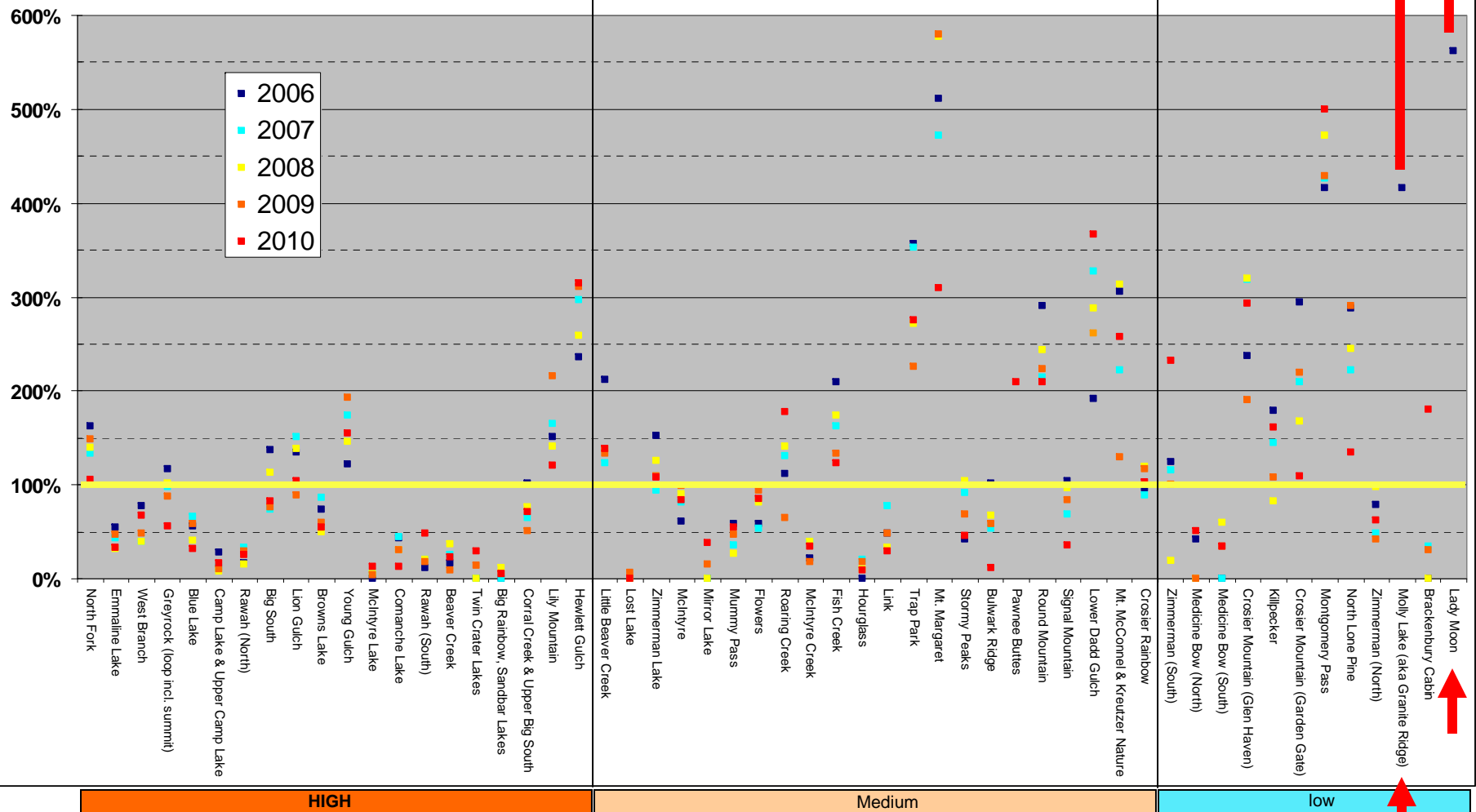
Stock	2010 Field Guide			# patrols	Priority SCORE	
	Trail Patrol	day hike	backpack			stock
	North Fork	1 HIGH	1 HIGH	1 HIGH	261	56.2
P	Emmaline Lake	1 HIGH	1 HIGH	3 low	73	50.9
	West Branch	3 low	2 Medium	1 HIGH	113	49.0
P	Greyrock (loop incl. summit)	1 HIGH		SP	144	47.3
P	Blue Lake	1 HIGH	1 HIGH	SP	79	43.0
	Camp Lake & Upper Camp Lake	3 low	2 Medium	2 Medium	29	42.9
	Rawah (North)		2 Medium	1 HIGH	31	42.5
NR	Big South	1 HIGH	1 HIGH	NR	123	36.6
	Lion Gulch	1 HIGH	1 HIGH	2 Medium	141	35.7
	Browns Lake	1 HIGH	1 HIGH	1 HIGH	80	35.2
	Young Gulch	1 HIGH		3 low	186	33.8
	McIntyre Lake		3 low	3 low	8	32.6
NR	Comanche Lake	2 Medium	1 HIGH	NR	40	32.0
	Rawah (South)		2 Medium	1 HIGH	22	31.6
	Beaver Creek	2 Medium	2 Medium	3 low	27	30.6
	Twin Crater Lakes		2 Medium	1 HIGH	10	28.7
	Big Rainbow, Sandbar Lakes		2 Medium	1 HIGH	5	27.3
	Corral Creek & Upper Big South	2 Medium	2 Medium	3 low	67	27.2
NR	Lily Mountain	2 Medium		NR	132	25.0
	Hewlett Gulch	1 HIGH		NR	229	24.1
	Little Beaver Creek	3 low	3 low	3 low	114	22.0
	Lost Lake	3 low	3 low	3 low	3	21.2
	Zimmerman Lake	2 Medium		3 low	78	20.3
	McIntyre	3 low	3 low	1 HIGH	56	19.6
	Mirror Lake		3 low	3 low	8	18.1
	Mummy Pass	2 Medium		2 Medium	26	17.8
	Flowers	3 low	3 low	1 HIGH	51	17.8
NR	Roaring Creek	2 Medium		NR	85	17.0
	McIntyre Creek		3 low	1 HIGH	20	16.1
	Fish Creek	3 low	3 low	3 low	82	15.6
	Hourglass	3 low	3 low	3 low	7	15.6
	Link	3 low	3 low	3 low	25	14.3
	Trap Park	3 low		2 Medium	130	13.5
	Mt. Margaret	3 low		1 HIGH	199	12.4
	Stormy Peaks	3 low		3 low	28	12.2
	Bulwark Ridge	3 low			22	11.9
	Pawnee Buttes	3 low		3 low	18	11.9
NR	Round Mountain	2 Medium		NR	90	11.8
	Signal Mountain	3 low	3 low	3 low	31	11.6
	Lower Dadd Gulch	3 low	3 low	3 low	116	11.6
P	Mt. McConnel & Kreutzer Nature	1 HIGH		SP	85	10.7
	Crosier Rainbow	3 low		3 low	37	10.7
	Zimmerman (South)	3 low	2 Medium	1 HIGH	37	8.3
	Medicine Bow (North)		3 low	3 low	5	8.1
	Medicine Bow (South)		3 low	3 low	11	8.1
	Crosier Mountain (Glen Haven)	3 low		3 low	71	8.0
	Killpecker	3 low		3 low	34	7.7
NR	Crosier Mountain (Garden Gate)	3 low		NR	50	7.6
	Montgomery Pass	3 low		3 low	116	7.4
	North Lone Pine	3 low		3 low	58	7.2
	Zimmerman (North)	2 Medium	3 low	3 low	19	6.6
	Granite Ridge (aka Molly Lake)	3 low		3 low	238	5.0
	Brackenbury Cabin		3 low	3 low	9	4.6
	Lady Moon	3 low		3 low	193	4.6
		20	10	7	12	
		22	9	9	4	
		12	25	16	24	

Comparisons between new priorities and those in the 2010 Field Guide

The yellow line at 100% indicates the goal (where actual coverage = priority coverage)



# Annual Trail Patrol Coverage as a % of Priority Coverage

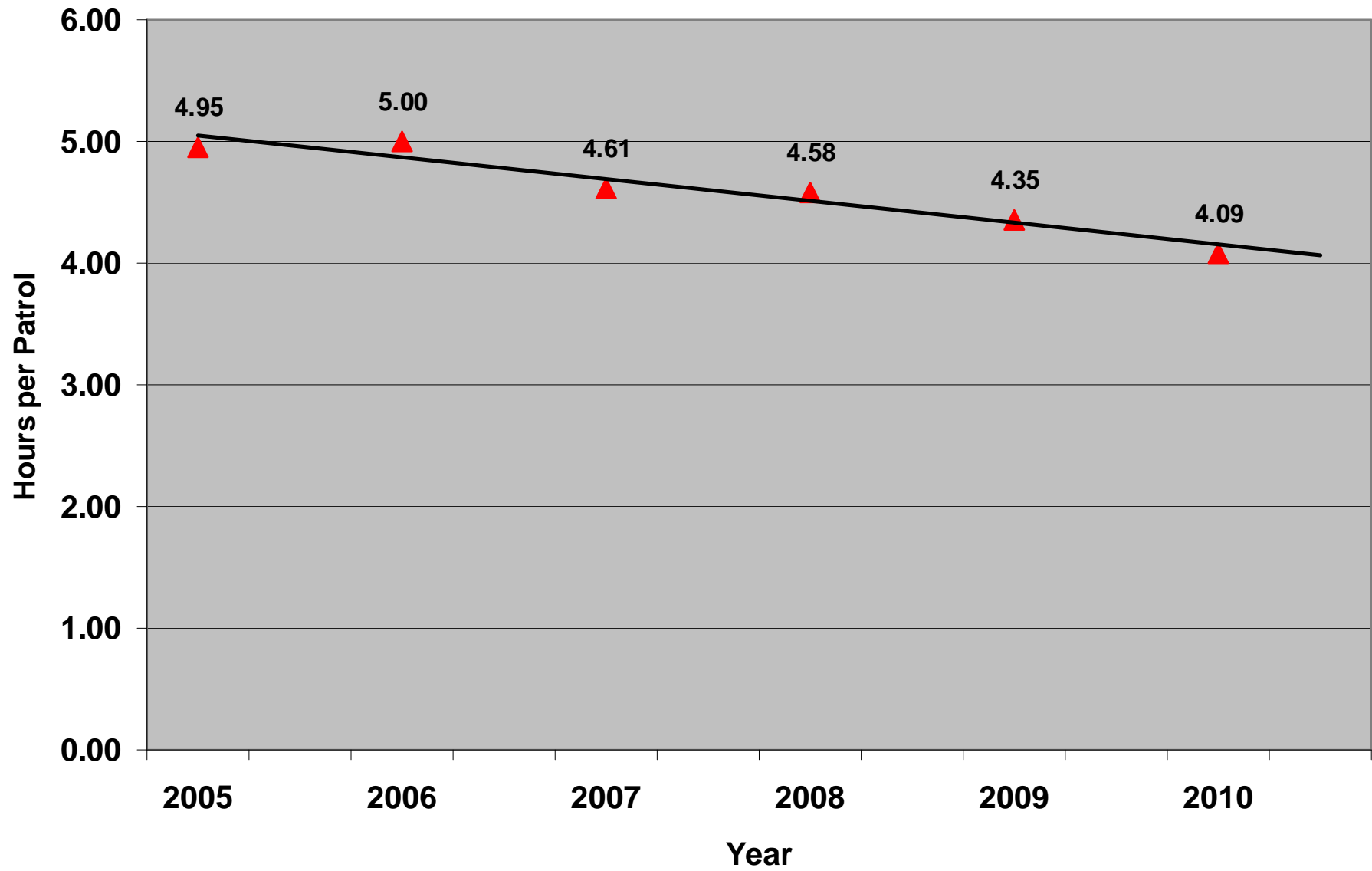


HIGH

Medium

low

### Average Patrol Duration



## **Attachment B**

### **Forest Service Report, Announcements, & Information Sharing – Jan. 2011**

#### **Forest Service Report 2011-01 – Kevin Cannon**

I thought I would start off with a brief statement from the Chief of the Forest Service that we sent out before the holidays where he mentions five focus points the agency will strive for in the future:

1. **USFS Five Focus Points for the Future**

*OUR FIVE FOCUS POINTS FOR THE FUTURE:*

*SAFETY, INCLUSIVENESS, RESTORATION, FIRE AND COMMUNITY*

*SAFETY: We will engage the entire workforce in 2011. We will travel a learning journey that will make us a zero-fatality organization.*

*INCLUSIVENESS: We will build a work environment that fully supports the diverse workforce of the future. We want our agency to be free from barriers and discrimination, for our employees and for the public whom we serve. We want diversity to be actively embraced by every Forest Service employee.*

*RESTORATION: We need to meet the challenges of ecological restoration, to address fire and fuels, invasive species, and watershed degradation. We will do this through collaboration, landscape-scale conservation, climate change science and fire-adapted ecosystem research.*

*FIRE: We will partner with communities and fellow agencies to maximize our suppression capabilities, and support community efforts to reduce the threat of wildland fire. We will be ready.*

*COMMUNITY: We will engage communities to help America reconnect to the outdoors, expand on recreation benefits and create a wide range of opportunities for economic expansion. We will do everything we can to put America back to work.*

*This is my vision for where we are headed, to build on our conservation legacy. With your help, we'll get there. I hope your holidays are warm and wonderful and that you take some time to reflect on everything we have accomplished this year. Most importantly, I want you and your family to be safe.*

*Thank you for all that you do.*

#### **2. Bark Beetle**

One of the major topics recently has been whether PWV will have the use of Jacks Gulch campground for the training event this year. There are hazardous trees that need to come down before the campground should be open to the public. The Forest Service will do its best to get the contractor that will take care of the trees to go in as soon as the weather is good, but since we are depending on the weather being good for about a week, it may cause the training to be held elsewhere. There are other factors to consider, but safety is foremost. I will continue to keep the PWV Chair apprised of any changes or updates.

#### **3. Budget**

The Forest Service (and other gov't agencies) continues to be under a Continuing Resolution until Congress passes a budget. Basically a reduced allocation from previous years.

#### **4. New Volunteer Agreement Forms**

There is now an updated form that needs to be filled out. Make sure to get a doctor's release to perform patrolling duties if you know you have a limitation (medical or physical) to performing those duties. Also, be sure to completely fill out and sign the form. The electronic version will highlight in red what fields must be filled in and you can save the form for future years to submit with your information. We do need an original signature, not an electronic signature.

## 5. Kevin's Projects

Major projects I am currently working on are mostly trail management related (read as paperwork).

- One of the projects is developing guidance on what trails will require communication devices to be taken by volunteers, mostly due to hazards from bark beetle hit areas.
- I am trying to get revisions completed to our Trail and Wilderness regulations making them more consistent and covering omissions from the past.
- Scheduling of summer crews to accomplish trail work, which would include more work on the Lady Moon and Mount Margaret trails.
- Initiating a Wild and Scenic River survey for the summer (getting survey form approval from the powers that be).

## 6. Coming Up

The Recreation Shop for CLRD/PNG will have a full day meeting in February strategizing on projects for the next 2 to 3 years. Projects of interest to PWV that Kevin will make sure are listed are:

- Equestrian Campground near Browns Park
- Volunteer mini-campground at Stub Creek
- Electrification and expansion of Jacks Gulch Equestrian Campground
- Corral Creek Trailhead Re-Design
- Trap Park Trailhead Re-Design

This does not guarantee that they will be attempted, but they will be voted on by the Recreation Shop to prioritize them for work. And even if it is ranked high the stars (sometimes) still need to align to make the project a priority to be done.

## 7. On Going Projects

Things the Forest Service are still working on (at least I am):

- Dunraven Trailhead – Environmental document is done, now we are looking for funding
- Hewlett Gulch Trail work – Environmental document is done, working with WRV to get funding and people to build re-route should happen in 2011.
- Margaret-Molly-Moon Trail work – This will be an ongoing project for several years (if not longer). This year we hope to build the re-route for the Mount Margaret Trail, finish the Molly Moon Trail, continue work on the Lady Moon Meadow Loop Trail, and do the stream fords/hardenings at the Mount Margaret/South Fork Lone Pine Creek (probably will be a project for National Public Lands Day in September); Elkhorn Creek crossing just north of the Elkhorn Trailhead; and another Elkhorn Creek crossing just south of the Granite Ridge Trail.
- Neota Creek Trail – continue trail work on realignment/reconstruction of trail
- Pawnee Buttes Trailhead – Trying to get the approved new trailhead built.

\*\*\*\*\*

**Recent emails regarding Friends of Mt Evans & Lost Creek Wilderness (FOMELC), PWV, and NWSA**  
2011-01 – Jim Shaklee

The following represents an email thread involving various PWVs regarding the question of PWV helping FOMELC get re-established. It represents the recent history of what may become a question for the Board. The most recent email is listed first:

From: Jim Shaklee [jbsgenetics@hughes.net] Sent: Wed 1/12/2011  
To: 'Dave Cantrell'  
Cc: Chuck Bell; Jacques Rieux; Fred Allen; Jan Creager; Bob Manuel; Kevin Cannon  
Subject: PWV - FOMELC and NWSA

Dave,

The broad request to involve PWV in support/mentoring/training to assist the Friends of Mount Evans and Lost Creek Wilderness this year was brought up and discussed at the January 6th PWV Executive Committee meeting, with the following outcomes:

1) Given all of the identified needs and issues currently facing PWV and the initiatives underway to address many of these matters (e.g., producing a written statement of PWV goals and objectives, developing a 3-year plan for the future, producing a PWV annual report to the USFS, developing a comprehensive, integrated, and aggressive training program for returning members, and finalizing the Organization Handbook [incl. procedures and policies]) this year, the Executive Committee has some concerns that a major commitment by PWV to assist FOMELC might detract from our ability to follow through on PWV's own needs and initiatives.

1) The Executive Committee believes that inviting some number of FOMELC members to attend and participate in PWV's Spring Training this year (May 20-22) would be a good idea and one way PWV could support their efforts with minimal impact to our own needs and activities.

2) PWV should communicate (meet) with FOMELC representatives to explore and identify their specific needs and what roles and assistance PWV might be able to provide to assist them in the coming 6-12 months.

3) The PWV representatives involved in item #2 should bring information (and possibly a recommendation) to the Board regarding PWV's possible involvement with FOMELC in the coming year.

4) If the Board approves PWV support for the FOMELC effort, representatives of the two groups should define their expectations and respective roles (possibly via a written MOU).

5) If the Board does not approve official PWV support for FOMELC's needs this year, it does not preclude individual members of PWV helping them.

Given the above, I recommend that the group of PWV's you originally contacted on this matter (Chuck Bell, Jacques Rieux, Fred Allen, Jan Creager, and me) meet with FOMELC representatives (and their USFS supporters) as soon as possible to accomplish the fact finding and scope definition identified in item #2. My recommendation would be for a face-to-face meeting of all parties (not a conference call), because I believe it will be much more effective (and several of us do not yet know the FOMELC members or their USFS partners).

Please call me at your earliest convenience so that we can talk about this matter and perhaps take the next step.

Regards,  
jim

From: Jim Shaklee Sent: Fri 12/31/2010  
To: 'Dave Cantrell'  
Cc: Chuck Bell; Jacques Rieux; Fred Allen; Jan Creager; Bob Manuel  
Subject: RE: PWV-FOMELC-NWSA -- Let's Go!

Dave,

I plan to ask the Executive Committee to consider the FOMELC need and NWSA request for PWV assistance at its January 6 meeting. I will be forwarding the email you sent out earlier today to the committee members later today to brief them on the matter. I assume that they will have an opinion and want to bring it to the Board at its January 20<sup>th</sup> meeting. This is probably a matter that the Board should weigh in on before any significant plans or commitments are made on behalf of PWV.

If you would like to address the Executive Committee on this matter you are welcome to attend the January 6 meeting. While I think an initial conference call involving FOMELC and PWV members (+ yourself and USFS representatives) might be productive, I really think a early face-to-face meeting would be desirable to introduce the various parties to each other, identify FOMELC needs and how PWV might help them meet these needs, and accomplish other relevant tasks.

I think that it might be better to have both the initial conference call and a face-to-face meeting with a smaller group of participants to define needs, possible PWV contributions, and future opportunities for collaboration, and some affirmative



response from the PWV Executive Committee and/or Board before sending out a broadcast email to all PWVs on this matter.

I recommend that you contact Bob Manuel about possibly contributing to the FOMELC mentoring effort, both as an active and experienced PWV and as the leader of PWV's Trail Crew.

Regards,  
jim

---

From: Dave Cantrell Sent: Fri 12/31/2010  
To: Jim Shaklee; Mike Israel; Chuck Bell; Fred Allen; Jacques Rieux; Ralph Swain; Bradt Ralph  
Cc: Jan Creager; Kevin Cannon; Chris N Brown; Heather Day; Adam Andis; Hawk Metheny; Randy Welsh; Lisa Heagley  
Subject: PWV-FOMELC-NWSA -- Let's Go!

Friends of Friends of Mount Evans and Lost Creek Wilderness,  
Happy New Year!

I wrote 12/21 to ask if Poudre Wilderness Volunteers, working with the National Wilderness Stewardship Alliance, could help Friends of Mount Evans and Lost Creek Wilderness get back on their feet. My original letter is at the bottom.

It looks like there is very good support from PWV and the Forest Service to help FOMELC get restarted. I've pasted comments together, below.

My role needs to be limited to helping with the kick start, but I think we can put together a team that will help Mike and FOMELC get the job done.

Here's a suggested plan of action:

- \* Unless I hear otherwise, I will post a Doodle with dates starting in mid-January when everyone interested can get on the phone together. Ralph, may we count on you to set up a conference call number?

- \* I will draft an all-PWV e-mail in the next couple days to post via our website, asking for volunteers, hoping to locate a few people to join this effort.

- \* PWVs: If, in the next couple days, each of you will recommend at least one PWV who has shown interest in getting more involved, I'll send individual emails to those people.

- \* Mike, will you call Ralph and / or Ralph to discuss whether there is any potential NFF money you should apply for?

What else can we do to get started? What am I forgetting?

Cheers,  
Dave

\*\*\*\*\*

Ralph Swain, who you all know for his tireless support of Wilderness, said Count me in to help.

Mike has done a wonderful job of holding FOMELC together.

Also, Lisa Heagley and Ralph Bradt at the districts need to be part of this effort.

One portion of the off-the-top DC wilderness funding is dedicated to NFF to help with "less than 1 to 1 ratio matching funds" to help young groups get on their feet. We could easily prepare a proposal for NFF after the break to continue your supportive efforts with FOMELC to help them sustain themselves over time.

Let's talk after the break.

PS. We need a FOMELC Board member to attend the NWSA conf. in Vegas in March.

rws

Ralph Bradt, of the Clear Creek Ranger District, said:

Thanks, Dave!

No one can fail to be impressed by what PWV has been able to accomplish in northern Colorado. Being at Denver's back door, both Mount Evans and Lost Creek really need the help of a similar stewardship organization to help deal with the problems associated with heavy use. FOMELC has been this and has achieved a lot, but has always struggled with sustainability.

I think the most difficult thing for a developing organization to do is to reach a point at which it acquires the momentum to become self-sustaining. It's too much for one person to do alone. Central to this is building a dedicated core group, but both Lee and now Mike have found it a struggle to build that dedicated core. PWV has a lot of experience in doing this and building a sustainable organization.

Please let me know what I can do to further this.

Ralph Bradt

Wilderness/Trails/Travel Management

Clear Creek Ranger District

Chuck Bell, of the PWV Advisory Board and NWSA, said:

Dave,  
Are you planning on putting together a meeting on this?

Charles Bell

Jacques Rieux, of the PWV Advisory Board, said:

I think PWV has enough experience and achievements that it can act as mentor, incubator and general advisor to organizations who have somewhat the same mission we do. By all means, PWV should pitch in.

Jim Shaklee, PWV Chair, said:

Conceptually, I think that PWV could provide assistance to support FOMELC's efforts to reestablish an active Wilderness stewardship program. However, it is unclear to me exactly what FOMELC's needs are, how we could bolster their training efforts (given that Mike Israel already has a copy of the 2010 PWV Field Guide and participated in PWV's Spring Training last year), and how we would mentor them throughout the coming year.

I think that Chuck's suggestion that you (NWSA) set up a meeting (presumably with both PWV and FOMELC representatives) to identify and discuss their needs and ideas of how PWV might be of assistance is a good idea.

Please keep me informed regarding this matter.

Regards,

jim

Fred Allen, who has already worked with FOMELC, says:

Happy New Years from cool yet sunny Florida.

I met several times during the past year with several folks interested in getting things going again in the Mt Evans and Lost Creek Wilderness Area. There is interest down that way. Perhaps we can try again next season to work alongside their folks with some campsite assessments while showing by doing our patrol thing.

Maybe 8-10 of their volunteers could attend ST (be one group) then go back with better understanding.

rgds

Fred

\*\*\*\*\*

On Dec 21, 2010, at 9:46 AM, Dave Cantrell wrote:

Jim, Chuck, Fred, Jan, and Jacques,

PWV can be a major help to the Friends of Mount Evans and Lost Creek Wilderness, and help bring volunteer, on-the-ground stewardship back to some of Colorado's most critically exposed areas.

#### Background

Lee Lambert left FOMELC after giving it everything she had. The organization came close to folding. Mike Israel has been working hard to rebuild, but it's a big job.

The National Wilderness Stewardship Alliance's goal is to "improve wilderness stewardship and create an allied constituency for wilderness by connecting wilderness stewardship organizations with each other, linking our efforts and experiences, directing groups to resources, and fostering new organizations.... share knowledge, experience and expertise among local, regional, and national stewardship organizations."

You'll note that NWSA's mode of action is largely indirect: "connecting ... linking ..." We're working hard to develop products and services which can be helpful, and we have a depth of experience within our constituent organizations. But by far the most useful thing NWSA can do is help strengthen the connection between PWV and FOMELC. Mike came to Spring Training, and has been in touch with several of you. He is ready for a big push to re-establish a viable organization. But he needs help.

#### Proposal

This winter, PWV puts together a team to help FOMELC market, recruit, and develop materials. This spring and summer, we provide the direct support to bolster their training efforts and mentor them through a first season of on-the-ground stewardship.

NWSA has a cost-share agreement with the FS, one part of which is to do Case Studies that "provide informative examples of a wilderness stewardship group taking action." This gives us a mechanism to join in the effort, to help organize and strengthen the PWV-FOMELC link any way we can, and to eventually document it for others' use. We'd help any way we could. But nothing can touch the immediacy of a local group, and no one can touch PWV on a project!

One immediate caveat: I heard a rumor that there's a rumor that NWSA has money. False. There is some NFF money out there right now -- it may be pretty late to try to line up anything, but NWSA and our incomparable FS liaisons would help if we could.

Is there enough interest to start a discussion about how we could build a PWV team to help FOMELC rebuild?

Cheers,

Dave

\*\*\*\*\*

## **Results of Goals & Objectives Exercise at December 16<sup>th</sup> Board Meeting 2011-01 – Jim Shaklee**

Goals (and objectives) have been clustered together by theme:

### **A. FUNDRAISING**

**Goal: Raise enough money to have enough funds to operate PWV without concern each year.**

**Objectives:**

- 1) Raise \$50,000/year
- 

**Goal: Develop a more comprehensive fundraising program.**

**Objectives:**

- 1) Form a committee for fundraising, and...
  - 2) Develop fundraising strategy by 3/31/2011
  - 3) Raise additional \$15,000 for operating budget by 2011 year end.
- 

**Goal: Reach an endowment fund of \$60,000 within 5 years.**

**Objectives:**

- 1) Develop brochure on planned giving.
  - 2) Seek a few large donors for endowment fund.
- 

### **B. SAFETY**

**Goal: Provide safety related courses and classes to PWV members.**

**Objectives:**

- 1) First Aid & CPR class
  - 2) Wilderness Survival Course
  - 3) GPS/SPOT/Radio class + field training
  - 4) Weather – understanding & preparation
- 

**Goal: Make sure returning members & new recruits are safe on their patrols.**

**Objectives:**

- 1) Provide for First Aid/CPR training for all members and track participation.
- 

**Goal: Keep safety foremost in everyone's mind**

**Objectives:**

- 1) Newsletter safety segment
  - 2) Monthly safety email
-

### **C. EDUCATE & TRAIN MEMBERS**

**Goal: Educate the volunteers to better serve the public while patrolling trails.**

**Objectives:**

- 1) Provide map & compass/GPS training for all new volunteers & existing members at Spring Training.
  - 2) Provide ongoing hand-out materials for the public on the trails.
- 

**Goal: Increase the effectiveness of PWV members.**

**Objectives:**

- 1) Offer recurrent classes.
  - 2) Offer online training “tests” from the Field Guide so members will know their “weaknesses.”
  - 3) Periodically survey members regarding what they felt they need to know in order to be effective in working towards our mission.
- 

**Goal: Educate**

**Objectives:**

- 1) Educate our members in the skills to do their job – who, in turn, will educate the public they contact on their patrols.
- 

**Goal: Training**

**Objectives:**

- 1) Train PWV members who in turn educate (train) public on the trail.  
“Trained rangers are an asset to everyone”
- 

**Goal: Improve competence & skills of returning volunteers.**

**Objectives:**

- 1) Establish special training program and strongly encourage all volunteers to attend
- 

**Goal: Train & Educate citizen volunteers**

**Objectives:**

- 1) Spring Training
  - 2) Ongoing training plan
- 

**Goal: Train & equip to train**

**Objectives:**

- 1) Assist USFS in managing & protecting the wilderness
- 

**Goal: Increase training opportunities for present members.**

**Objectives:**

- 1) Set agenda of possible training opportunities
  - 2) Get needed trainers
-

**Goal: Provide classes and courses to PWV members to improve competence in performing patrols as well as other ranger and host functions.**

**Objectives:**

- 1) Leave No Trace class and field training
  - 2) Backpacking course and field training
  - 3) Stock workshop for hike and stock patrollers
  - 4) Invasive weed ID & treatment class and field training
  - 5) Trail maintenance class and field training
  - 6) Mentoring class
  - 7) Kids in Nature leadership class
  - 8) Winter patrolling class
  - 9) Packing with llamas field training
- 

**Goal: Training new and old members**

**Objectives:**

- 1) Survey of members to determine where training falls short; what worked. Keep to 5-10 areas only so not all over board. (I know that Margaret send out comments on this and I'm not sure where that went or how it helped overall.)
- 

**Goal: Establish a comprehensive and integrated supplemental training program for returning members.**

**Objectives:**

- 1) Offer at least 4 training sessions at Spring Training 2011; including Wilderness Survival, Map & Compass,
- 

**Goal: Have returning PWV members know what they should to do their "job: well.**

**Objectives:**

- 1) Provide a training program for returning members that addresses specific basics and tracks participation – LNT/Regulations; ART
- 

**Goal: Equip**

**Objectives:**

- 1) Through training and mentoring
  - 2) Knowledge to know what they need to have (equip) to do their jobs.
-

## **D. IMPROVE PATROL COMPETENCE AND TRAIL COVERAGE**

**Goal: Members understand expectations for a successful (well done?) patrol.**

**Objectives:**

- 1) Have members complete an online survey of factual true/false questions about patrol expectations at the end of July.
  - 2) Have a committee compare/contrast consecutive trail reports on a key trail & gauge patrol (report) accuracy.
- 

**Goal: Achieve more balance in trail coverage by our patrols.**

**Objectives:**

- 1) Establish priorities of trail coverage.
  - 2) Increase patrols on high priority, more difficult, trails.
  - 3) Decrease patrols on lower priority, easier trails.
- 

**Goal: Patrol the trails for trail condition.**

**Objectives:**

- 1) See that all trails get sufficient coverage.
  - 2) Assess the condition of the trails through accurate trail reports.
  - 3) Determine whether improvement over previous years is being made.
  - 4) Determine whether improvements are occurring due to more work by PWV members or through education of the public.
- 

**Goal: Patrol for USFS**

**Objectives:**

- 1) # patrols/PWV
  - 2) Interaction with the public
  - 3) Get the reason to be out there, out there...
- 

**Goal: Provide accurate trail reporting information to the USFS.**

**Objectives:**

- 1) Create “training videos” and the “FAQ” section on the website for all members for the purpose of instructing on how to use the reporting website.
-

## **E. RECRUIT, EQUIP, & FIELD VOLUNTEERS**

### **Goal: Recruit**

#### **Objectives:**

- 1) Recruit volunteers who care and want to be with PWV. The rest is easy.
- 

### **Goal: Recruit volunteers education on all fundamentals of a PWV Ranger.**

#### **Objectives:**

- 1) To further protect our natural heritage by solid education of the public
  - 2) About outdoor ethics
- 

### **Goal: Recruit citizen volunteers**

#### **Objectives:**

- 1) We must decide how large the organization should become
  - 2) Organize recruiting strategy
- 

### **Goal: Recruit citizens that have a desire to further their knowledge skills.**

#### **Objectives:**

- 1) To pass on to users of our National Forests family and friends
- 

### **Goal: Equip citizen volunteers**

#### **Objectives:**

- 1) Provide uniform
  - 2) Provide First Aid kits
  - 3) Provide introduction – list of necessary equipment
- 

### **Goal: Field citizen volunteers**

#### **Objectives:**

- 1) Schedule member activities &
- 

### **Goal: Develop a different method for helping members schedule hikes with each other and mentoring hikes**

#### **Objectives:**

- 1) Develop new process by Spring Training 2011.
-

**F-1. EDUCATE THE PUBLIC - while on patrol**

**Goal: Protect the Wilderness**

**Objectives:**

- 1) Educate the public
- 

**Goal: Educate the public**

**Objectives:**

- 1) The number of knowledge transfer that is meaningful; discussion types i.e., effect of dogs; usage of trails; how to minimize input.
- 

**Goal: Educate the public**

**Objectives:**

- 1) Patrolling the wilderness district
- 

**Goal: Educate.**

**Objectives:**

- 1) Educating public
- 

**Goal: Build community.**

**Objectives:**

- 1) Talk with other PWVs & the public
- 

**F-2. EDUCATE THE PUBLIC - public outreach**

**Goal: Get buy-in from the community that what we do is valuable to preserve.**

**Objectives:**

- 1) Communicate our deeds & goals.
- 

**Goal: Develop future PWVs**

**Objectives:**

- 1) Incorporate scouts, KIN, junior patrol
  - 2) How to get people out there & cherish it
-



## **G. REVIEW, EVALUATE, & IMPROVE PWV'S ACTIVITIES AND PROGRAMS**

**Goal: Evaluate what PWV does on a regular basis.**

**Objectives:**

- 1)
- 

## **H. TRAIL CREW**

**Goal: Have well trained Trail Crew**

**Objectives:**

- 1) Provide three training opportunities on the three main aspects of trail maintenance during the year (tread, clearing, and facility [bridges, signs, etc.] repair).
- 

**Goal: Protect Wilderness trails in CLRD with a viable PWV Trail Crew**

**Objectives:**

- 1) Coordinate efforts with USFS to cover all major Wilderness trails.
  - 2) Increase membership of PWV Trail Crew
  - 3) Do one major project with PWAV/USFS/Wilderness restoration trail crews
- 

## **I. WEED CREW**

**Goal: Establish a weed program to support the CLRD weed goals.**

**Objectives:**

- 1) Provide 5-species weed training for new members at Spring Training
  - 2) Provide 22-species weed training for Weed Crew members
  - 3) Establish a Weed Crew to pull weeds
  - 4) Pull all Musk thistle infestations on the Hewlett Gulch Trail in 2011.
  - 5) Pull all Musk thistle infestations on the North Fork Trail in 2011.
- 

## **J. OTHER**

**Goal: Have fun while preserving our legacy.**

**Objectives:**

- 1) Laugh & share our enthusiasm with all.
- 

**Goal: Goals are (mostly) stupid: seize the day!**

**Objectives:**

- 1) Through all goals out & just do it!
-

**Draft Program (with some speakers notes) for PWV Open House 2011-01 – JBS**

**2011 Prospective Recruit Open House  
(January 25, 2011; 6:30 PM start time)**

**Welcome and Brief Description of PWV – Chair (Jim Shaklee)**

Service organization; USFS-CLRD; 16<sup>th</sup> year; 265 active members; no paid staff

Board of Directors (n = 15)

Officers of the Board (n = 6)

Advisory Board (n = 16)

Standing Committees/programs (n = 25+)

[Fundraising, Office Crew, Members In-Reach; Public Outreach, Budget, Public Website, Stock Patrol]

**Founding, Mission, History, & Evolution of PWV – PWV Founder (Chuck Bell)**

**USFS CLRD: Scope and Needs – Kevin Cannon**

**Training – Karl Ritters**

Kick-Off Night (May 4), PWV Field Guide, Spring Training (mandatory [May 20-22], and Mentor Patrols (mandatory, n=2)

(Supplemental Training Program throughout year)

**Trail Patrols – Jim Shaklee**

Our primary field focus is trail patrols [80% of membership via hiking/backpacking ( $\pm$  stock) and 20% via riding (or riding and hiking); 54 defined patrols of 58 system trails in CLRD + Pawnee Buttes]

Expected member commitment of 6 patrol-days per year

- Assist & Educate the public (LNT & ART)
- Collect data for USFS (usage, violations, issues, wildlife of interest)
- Trail maintenance
- Noxious weeds

**Non-Patrol Field Programs – Bob Manuel**

- 1 Trail Crew [trail maintenance; emphasis on clearing deadfall off Rawah & Comanche Peak Wilderness trails]
- 2 Trailhead Hosting
- 3 Adopt-a-Trail - trail maintenance on North Fork Trail emphasis on tree clearing, tread work, & bridge maintenance]
- 4 Winter Patrols [patrol selected trails winter & early spring]
- 5 Kids in Nature [introduce kids 7-11 to the backcountry – have fun, safety, LNT, plants & animals, and stewardship]
- 6 Weed Crew [noxious weeds training, public education, and treatment; weed pulls at 18 locations; 230+ acres]
- 7 Adopt-a-Highway [pick up litter along 4 miles of CO-14; mm 69-73]

**New members perspectives**

**Hiker/Backpacker – Mike Corbin**

**Horse Rider – to be determined (possibly Deb Chevront)**

**Wrap-up, Discussion, and Question/Answer session**

(incl. Kathy James, Jan Creager, Don Creager)

**Other Announcements& Information Sharing 2011-01 – posted for Barb Benjamin**

The 2010 Kids in Nature Annual Report has been finalized and is posted on the PWV website (About Us, Organization, “Committee Reports” -> Read more....). Please review this document and contact Barb if you have any questions or want more information. She would be happy to meet with the Board to discuss any issues or receive suggestions.

**Possible purchase of 10 Spot satellite communicators from REI 2011 – Jim Shaklee**

I have recently contacted James Hetland (REI Outreach Specialist) regarding PWV’s potential purchase of 10 Spot units. James is exploring options for obtaining discounted pricing for these units for this purchase.

[James also indicated there was a distinct possibility for another REI grant to PWV this spring. We should be considering our needs for the coming year, so that we are prepared to submit the grant application REI requires sometime in March or April. I propose that the Executive Committee take the lead on identifying PWV’s needs, so that we are prepared should this funding opportunity come to pass.]

**Supplemental Training: Class Survey Results 2011-01 – Karl Riters** (with column heading errors introduced by JBS corrected 23JAN2011)

**Supplemental Training Classes Sign-up Survey - Summary of Event Participation Response Numbers**  
 (Survey completed 1/11/2011. Results sorted on "Total Yes & Maybe" column)

25% of PWV members participated in Survey (68 participants)

Training Event	Yes	Maybe	No	No Response	Total Yes & Maybe	Event Leader	STC Liaison
Wildflowers	37	27	4	0	64	To Be Determined	K
Geology & History	34	28	5	1	62	To Be Determined	K
Wilderness Survival Introduction - ST & FC	19	37	9	3	56	Archy Archuleta	A
Wilderness Survival Introduction - ST	12	22	26	8	34	Archy Archuleta	A
Wilderness Survival Introduction - FC (if not	7	15	25	21	22	Archy Archuleta	A
Birding	30	24	13	1	54	To Be Determined	K
GPS/SPOT/Radio - Classroom FC	32	18	11	7	50	To Be Determined	K
First Aid & CPR Certification & Re-Certification	27	23	18	0	50	To Be Determined	K
GPS/SPOT/Radio - Field ST	19	27	15	7	46	To Be Determined	K
Map & Compass - Classroom FC	27	14	20	7	41	To Be Determined	K
Map & Compass - Field ST	22	17	22	7	39	To Be Determined	K
Field Guide Discussion Series	15	21	27	5	36	Jim Shaklee	M
Weed ID & Treatment - ST Field	17	17	30	4	34	Jim Shaklee	M
Introduction To Backpacking - 5 Class Course	16	18	34	0	34	Archy Archuleta	A
Wilderness Survival - 2 Weekends In Field	15	18	33	2	33	Archy Archuleta	A
Mentoring	17	14	33	4	31	Frank Gillespie	M
Weed Crew - Classroom	16	14	32	6	30	Jim Shaklee	M
Packing With Llamas - Field Weekend	4	24	38	2	28	Kay Valerio	K
Trail Maintenance - Classroom & Field	13	14	37	4	27	Kristy Wumkes	K
Stock Workshop - For Hikers & Stock Patrollers	22	4	40	2	26	Kathy Burgess	K
Winter Patrol	13	12	39	4	25	Laura VanArsdale	K
Leave No Trace - Classroom & Field	8	12	43	5	20	Garin VanDeMark	A
Kids In Nature	9	9	44	6	18	Barbara Benjamin	M
Stock "Hands On" Packing For Stock Patrollers	6	11	45	6	17	Kathy Burgess	K

**Abbreviations:**

ST = Event at Spring Training

FC = Event in Fort Collins

STC = Supplemental Training Committee

A = Archy Archuleta

K = Karl Riters

M = Margaret Shaklee